



**GIG**  
CYMRU  
**NHS**  
WALES

Bwrdd Iechyd Prifysgol  
Bae Abertawe  
Swansea Bay University  
Health Board



<b>Meeting Date</b>	<b>30 July 2020</b>		<b>Agenda Item</b>	<b>2.1 (ii)</b>
<b>Report Title</b>	<b>Implementing the Test, Trace &amp; Protect Programme in Swansea Bay</b>			
<b>Report Author</b>	Joanne Abbott-Davies, Assistant Director of Strategy & Partnerships			
<b>Report Sponsor</b>	Siân Harrop-Griffiths, Executive Director of Strategy			
<b>Presented by</b>	Siân Harrop-Griffiths, Executive Director of Strategy			
<b>Freedom of Information</b>	Open			
<b>Purpose of the Report</b>	This report outlines progress within the Swansea Bay area in implementing the Welsh Government's Test, Trace and Protect Programme.			
<b>Key Issues</b>	<p>The report highlights the integrated partnership approach taken across Swansea Bay, the key milestones achieved and planned and how this will contribute to the aims of the Welsh Government's Test, Trace and Protect Programme:</p> <ul style="list-style-type: none"> <li>• Preventing the spread of COVID-19 in the Swansea Bay area</li> <li>• Intervening early with cases and contacts to prevent onward transmission</li> <li>• Keeping essential services in Swansea Bay operational</li> </ul>			
<b>Specific Action Required (please choose one only)</b>	<b>Information</b>	<b>Discussion</b>	<b>Assurance</b>	<b>Approval</b>
	<input type="checkbox"/>	<input type="checkbox"/>	<input checked="" type="checkbox"/>	<input type="checkbox"/>
<b>Recommendations</b>	<p>Members are asked to:</p> <ul style="list-style-type: none"> <li>• <b>NOTE</b> the Welsh Government requirements for the Test, Trace and Protect programme</li> <li>• <b>NOTE</b> the progress made across Swansea Bay in implementing the Test, Trace and Protect programme</li> <li>• <b>NOTE</b> the risks associated with implementation of the programme</li> <li>• <b>NOTE</b> that a further verbal update on progress will be given at the Health Board meeting</li> </ul>			

# **IMPLEMENTING THE TEST, TRACE, PROTECT PROGRAMME IN SWANSEA BAY**

## **1. INTRODUCTION**

This report outlines progress within the Swansea Bay area in implementing the Welsh Government's Test, Trace and Protect (TTP) Programme, since the previous report submitted to the Health Board in June.

The report highlights the integrated partnership approach taken across Swansea Bay, the key milestones achieved and planned and how this will contribute to the aims of the Welsh Government's Test, Trace and Protect Programme:

- Preventing the spread of COVID-19 in the Swansea Bay area
- Intervening early with cases and contacts to prevent onward transmission
- Keeping essential services in Swansea Bay operational

## **2. BACKGROUND**

Welsh Government published its Test, Trace and Protect Plan on 13<sup>th</sup> May, and expected all Health Boards and Local Authorities to ensure the Programme was operational from 1<sup>st</sup> June 2020. Work has been underway across the Health Board and Local Authority partners since 4<sup>th</sup> May 2020 to mobilise efforts to ensure this was achieved.

### **2.1 Governance for Test, Trace & Protect in Swansea Bay**

The responsibility for implementation of the TTP Programme implementation sits with Health Boards and Local Authorities. To ensure this can be implemented at pace and in line with Welsh Government requirements, a governance structure has been agreed and put in place for Swansea Bay, and a plan has also been prepared. The governance structure has been updated to reflect the Health Board's broader Testing responsibilities and is attached at Appendix 1.

### **2.2 Progress with Implementing Test, Trace & Protect in Swansea Bay**

The All Wales Contact Tracing System (CRM) went live on 9<sup>th</sup> June 2020 and is being used to digitally manage tracing at local and regional level. However the reporting capability of the system is not expected to go live until Monday 13<sup>th</sup> July. As a result, tracing activity has not been reported in the meantime because of the significant manual workload this would require in advance of this automated reporting.

A joint communication plan across the region has been developed to amplify the national communication issued by Welsh Government in support of their NHS Test, Trace and Protect Strategy and in July this has utilised radio slots to spread key messages.

#### **(a) Antigen Testing**

Capacity for testing / swabbing is available at the Margam Drive Through facility (2 lanes) which has been in place since March and the Drive Through facility at Liberty Stadium (6 lanes) which was opened on 8<sup>th</sup> May. These facilities are capable of providing at least 600 tests per day, 7 days a week, from 09:00 to 19:00.

These two Covid Testing Units (CTUs) continue to support drive-through testing and also provide the staff resource to test at care homes and at key workers homes, if they are unable to drive.

From May 8<sup>th</sup> to June 19<sup>th</sup> the CTUs delivered the full population (i.e. all staff and residents, irrespective of symptoms) antigen testing programme for 130 care homes across the Swansea and Neath Port Talbot areas, in line with Welsh Government instructions. During that period, 2,424 residents and 2,996 staff were tested - just over 2% of residents and 2% of staff received positive results.

Following this testing programme, Welsh Government offered all care homes across Wales a weekly test for staff only on a four week pilot basis from w/c 15<sup>th</sup> June. Participating care homes order a suite of tests from the UK.Gov online portal to enable the testing of their staff, with specimens being sent to Lighthouse Labs across the UK for processing. There has been a range of issues with the logistics of the programme (test ordering problematic, issues with courier services, help and support not easy to obtain) and the Health Board has reported these problems to Welsh Government, requesting resolution and feedback.

The UK.Gov online portal for the general public provides the greatest demand for testing, with 2,616 people booking tests to date, via this method, at the Margam CTU - an average of 71 per day. The Health Board has been in discussions with Welsh Government and Deloitte, to extend this online service using the Deloitte online portal into the Liberty stadium.

The Health Board has received an additional Military Testing Unit [MTU], bringing this support package to four MTUs across the region. The MTUs currently support the steward and lane management functions for the two CTUs.

The CTUs also support the testing of patients requiring a negative result before surgery and clients requiring emergency admission to care home facilities. Tests for both groups are expedited at the labs to ensure a rapid test to referral turnaround time.

Staff aligned to CTUs have come from Primary Care Services, private Dental Practices and Public Health Wales (PHW). As these staff are required to return to their substantive roles a programme of staff replacement is underway, which must align with the transition timeframe, to ensure a continuation of testing programme.

Since the beginning of May to 12<sup>th</sup> July 2020, 15,477 antigen tests have been carried out via the CTUs, through care homes outreach visits and home testing visits. The tests fall into the following categories:

- Drive through testing for all critical workers (including care homes staff), plus patients requiring a negative result before a planned procedure.
- Community Testing Team outreaching across the region to test all residents in care homes and testing individuals requiring a negative test before admission to a care home.

- General public booking test appointments via the national online portal. This service is available to symptomatic members of the public only, and the Health Board currently offers 96 “slots” per day at the Margam CTU site.

At present, staffing has been expanded to run six CTU lanes across the two sites with some resources being redirected to support any outbreak areas within care homes and other closed settings. However due to low demand since the care homes testing programme was completed work is underway to scope reducing operating hours / number of lanes available with a view to minimise wasted resources, but recognising that there needs capacity to be the ability to increase capacity at short notice to respond to changing needs / guidance.

On 24.06.20 the Health Board met with Welsh Government and Deloitte to scope out moving to the Deloitte/Lighthouse Lab Model in Swansea Bay. This model would reduce processing requirements at the CTUs but also removes the local visibility / control of this capacity. The Multi-Agency Testing Cell has agreed to proceed with this model where some of the lanes at Liberty will be allocated for booking through the Deloitte process as a hybrid model of working with the ability to flex capacity locally in the remaining lanes to meet the demand from different sectors and respond to outbreaks/clusters as required.

However in these discussions it became clear that the “offer” from Deloitte differed across Wales with some Health Boards having CTUs staffed and managed by Deloitte in total, with Welsh Government funding these direct. In Swansea Bay the costs for the CTUs have been borne by the Health Board directly. This inconsistency has been raised with Welsh Government who are investigating and have undertaken to report back to the Health Board in due course.

### **(b) Tracing**

On a multiagency basis the approach agreed across the Swansea Bay area for the Trace and Protect element of the programme is as follows:

- Teams are organised by each Local Authority and provide a call centre function for trace and protect activity
- Teams are initially being staffed by Health Board and Local Authority repurposed staff working to a national standard operating process and to national role descriptors supported by national e-learning. As staff return to their usual roles a recruitment process is underway to fill these posts on an ongoing basis.
- Call centres will be virtual, utilising staff who can work from home in most cases and operate from 8am to 8pm, 7 days a week

Due to low numbers of positive cases currently it has been agreed by Leaders of the local authorities, Chair of the Health Board and the three Chief Executives to reduce working hours of the contact tracing teams from 09:00-18:00 to 09:00 to 17:00 with the caveat that if demand increases then this can be scaled up to accommodate changing service demands. It has also been agreed that in the first instance recruitment will only happen to fill 50% of the tracing teams, as demand has not warranted full staffing. Again, if demand increases then further recruitment will take place, and if there is a sudden spike in cases then staff who have previously been deployed into these positions will be used under emergency planning arrangements.

An update release of The All Wales Contact Tracing System (CRM) on 06.07.20 that addressed the first cohort of issues such as accessibility to the system, updating scripts has been implemented. It is anticipated that reporting functionality will be released w/c 13.07.20.

Notification of Welsh Government funding for contact tracing at the sum of £6.1m has been received. A response has been sent on behalf of the Health Board and two local authorities incorporating an update of progress, requesting addressing of the shortfall and clarity around funding for the testing element of the trace and protect programme.

### **2.3 Next Steps**

Due to the requirement to implement the Test, Trace and Protect programme so rapidly, since preparing this report significant changes will have already been implemented and so a further, verbal update will be given at the Health Board meeting.

## **3. GOVERNANCE AND RISK ISSUES**

A RAID (risk, action, issues and decisions) log is being maintained for the Test, Trace and Protect programme which identifies the following as the main risks for the programme:

- Services coming back on line and staff supporting CTUs are having to return to their substantive roles. Mitigation of this risk is being managed to ensure that the service does not fall over whilst we are recruiting to these roles.
- Availability of sufficient laboratory capacity to meet demand from testing activity in a timely manner. This risk will be mitigated in part if we move to the Deloitte/Lighthouse Model.
- Continued provision of antigen testing facilities or identification of alternative ones to support Test, Trace and Protect through the duration of the programme as current facilities may become unavailable as sports facilities continue to open up.

Actions have been identified to mitigate these risks, but currently these are still extant.

## **4. FINANCIAL IMPLICATIONS**

There will be financial impacts for the Health Board of running the additional testing capacity planned as well as for the Local Authorities in running the Trace and Protect arrangements. These are being quantified and discussions underway with Welsh Government to ensure these are met.

## **5. RECOMMENDATIONS**

Members are asked to:

- **NOTE** the Welsh Government requirements for the Test, Trace and Protect programme
- **NOTE** the progress made across Swansea Bay in implementing the Test, Trace and Protect programme

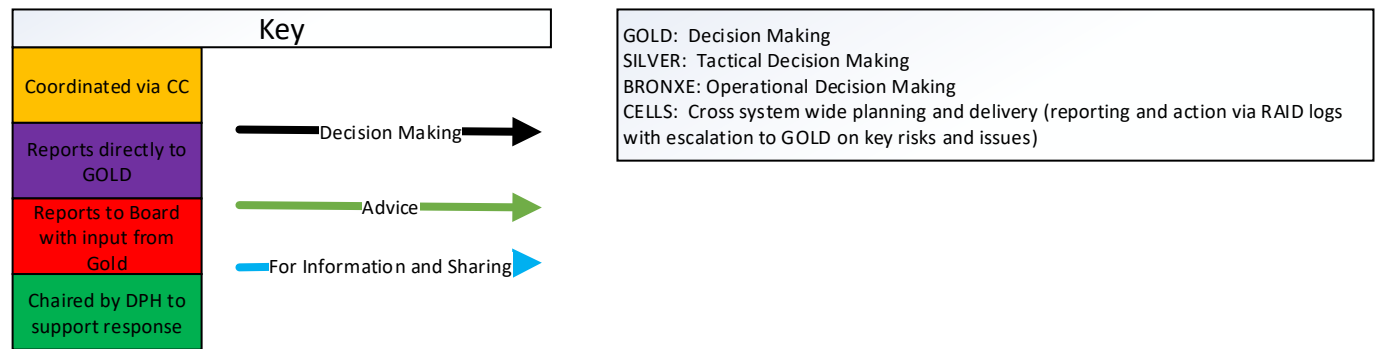
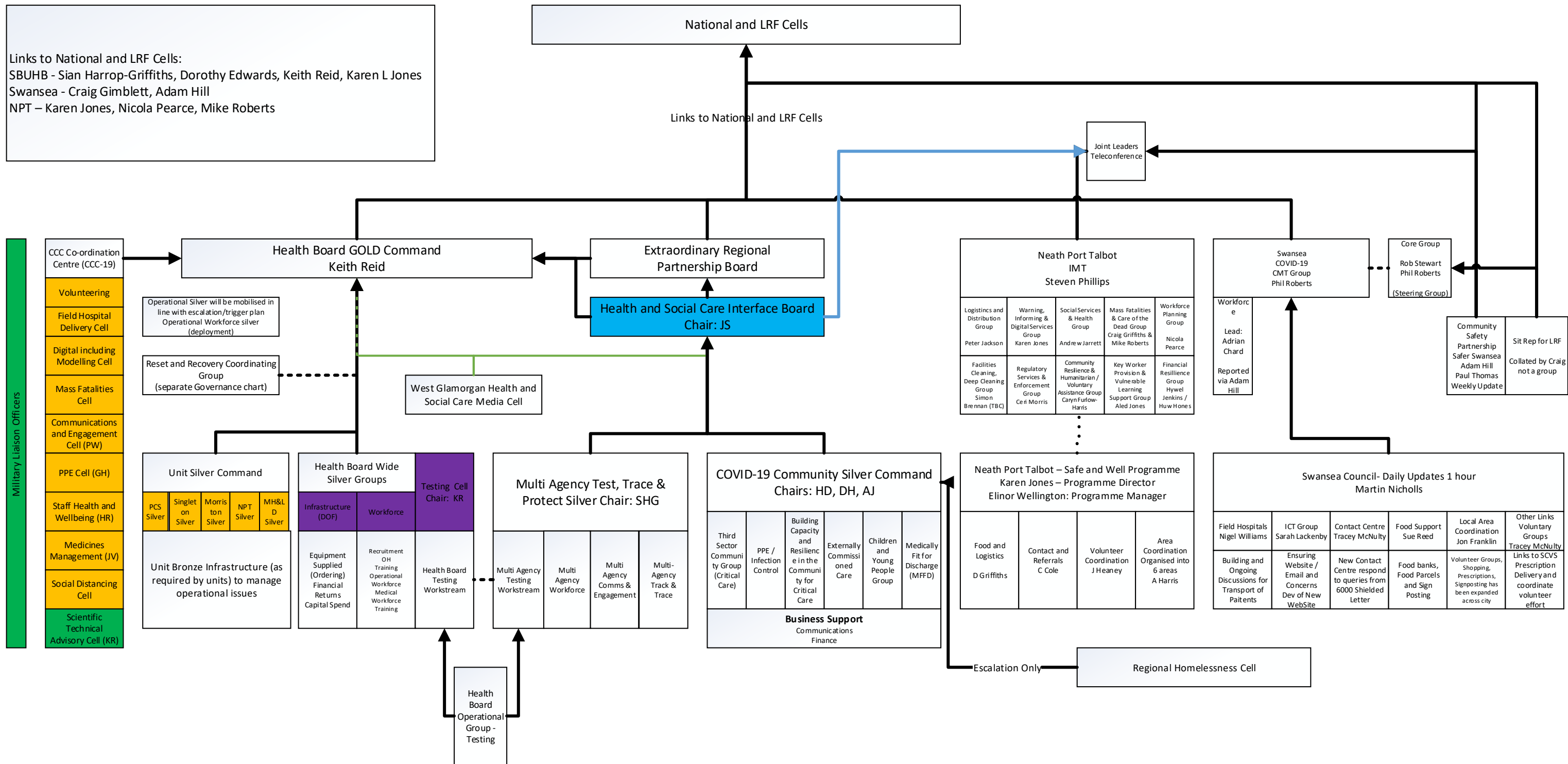
- **NOTE** the risks associated with implementation of the programme
- **NOTE** that a further verbal update on progress will be given at the Health Board meeting

<b>Governance and Assurance</b>		
<b>Link to Enabling Objectives</b> (please choose)	<b>Supporting better health and wellbeing by actively promoting and empowering people to live well in resilient communities</b>	
	Partnerships for Improving Health and Wellbeing	<input checked="" type="checkbox"/>
	Co-Production and Health Literacy	<input type="checkbox"/>
	Digitally Enabled Health and Wellbeing	<input checked="" type="checkbox"/>
	<b>Deliver better care through excellent health and care services achieving the outcomes that matter most to people</b>	
	Best Value Outcomes and High Quality Care	<input checked="" type="checkbox"/>
	Partnerships for Care	<input checked="" type="checkbox"/>
	Excellent Staff	<input checked="" type="checkbox"/>
	Digitally Enabled Care	<input checked="" type="checkbox"/>
	Outstanding Research, Innovation, Education and Learning	<input type="checkbox"/>
<b>Health and Care Standards</b>		
(please choose)	Staying Healthy	<input checked="" type="checkbox"/>
	Safe Care	<input type="checkbox"/>
	Effective Care	<input type="checkbox"/>
	Dignified Care	<input type="checkbox"/>
	Timely Care	<input type="checkbox"/>
	Individual Care	<input type="checkbox"/>
	Staff and Resources	<input checked="" type="checkbox"/>
<b>Quality, Safety and Patient Experience</b>		
<p>Monitoring will be put in place of people's experience of the Test, Trace and Protect programme so that action can be taken to improve any of the issues raised.</p> <p>Response times are being set for each part of the process so that adherence to these can also be monitored and actions taken if necessary to improve performance.</p>		
<b>Financial Implications</b>		
<p>There will be financial impacts for the Health Board of running the additional testing capacity planned as well as for the Local Authorities in running the Trace and Protect arrangements. These are being quantified and discussions planned with Welsh Government to ensure these are met.</p>		
<b>Legal Implications (including equality and diversity assessment)</b>		
<p>The Swansea Bay programme outlined above meets the requirements of the Welsh Government's Test, Trace and Protect Programme.</p>		
<b>Staffing Implications</b>		
<p>Staffing for the Test, Trace and Protect Programme across Swansea Bay will be based on repurposing health and local authority staff in the first instance but as these staff are required to bring core services back on line, there is likely to be a need to recruit staff externally to fulfil these roles and a recruitment campaign is being finalised.</p>		
<b>Long Term Implications (including the impact of the Well-being of Future Generations (Wales) Act 2015)</b>		
<p>The Swansea Bay Test, Trace and Protect programme aims to prevent the spread of coronavirus, ensure early intervention with cases and contacts to prevent onward transmission and to keep essential services operational, so ensuring that the wellbeing of Future Generations is safeguarded. The programme is aimed to operate initially for 12 months, focused on prevention, integration and collaboration between partner organisations with the involvement of the public in taking required action to reduce risks.</p>		
<b>Report History</b>	No reports have been presented on this topic.	

<b>Appendices</b>	Appendix A – Governance Structure
-------------------	-----------------------------------



# COVID-19 GOVERNANCE ACROSS WEST GLAMORGAN



# WALES WIDE GOVERNANCE

