



**GIG**  
CYMRU  
**NHS**  
WALES

Bwrdd Iechyd Prifysgol  
Bae Abertawe  
Swansea Bay University  
Health Board



<b>Meeting Date</b>	<b>25 June 2020</b>	<b>Agenda Item</b>	<b>3.2</b>
<b>Report Title</b>	<b>Implementing the Test, Trace &amp; Protect Programme in Swansea Bay</b>		
<b>Report Author</b>	Patricia Jones, Senior Project Manager & Julie Morse, Principal Project Manager		
<b>Report Sponsor</b>	Siân Harrop-Griffiths, Executive Director of Strategy		
<b>Presented by</b>	Siân Harrop-Griffiths, Executive Director of Strategy		
<b>Freedom of Information</b>	Open		
<b>Purpose of the Report</b>	This report outlines progress within the Swansea Bay area in implementing the Welsh Government's Test, Trace and Protect Programme.		
<b>Key Issues</b>	<p>The report highlights the integrated partnership approach taken across Swansea Bay, the key milestones achieved and planned and how this will contribute to the aims of the Welsh Government's Test, Trace and Protect Programme:</p> <ul style="list-style-type: none"> <li>• Preventing the spread of COVID-19 in the Swansea Bay area</li> <li>• Intervening early with cases and contacts to prevent onward transmission</li> <li>• Keeping essential services in Swansea Bay operational</li> </ul>		
<b>Specific Action Required</b> <i>(please choose one only)</i>	<b>Information</b>	<b>Discussion</b>	<b>Assurance</b>
	<input type="checkbox"/>	<input type="checkbox"/>	<input checked="" type="checkbox"/>
<b>Recommendations</b>	<p>Members are asked to:</p> <ul style="list-style-type: none"> <li>• <b>NOTE</b> the Welsh Government requirements for the Test, Trace and Protect programme</li> <li>• <b>NOTE</b> the progress made across Swansea Bay in implementing the Test, Trace and Protect programme</li> <li>• <b>NOTE</b> the risks associated with implementation of the programme</li> <li>• <b>NOTE</b> that a further verbal update on progress will be given at the Health Board meeting</li> </ul>		

# **IMPLEMENTING THE TEST, TRACE, PROTECT PROGRAMME IN SWANSEA BAY**

## **1. INTRODUCTION**

This report outlines progress within the Swansea Bay area in implementing the Welsh Government's Test, Trace and Protect (TTP) Programme, since the previous report submitted to the Health Board in May.

The report highlights the integrated partnership approach taken across Swansea Bay, the key milestones achieved and planned and how this will contribute to the aims of the Welsh Government's Test, Trace and Protect Programme:

- Preventing the spread of COVID-19 in the Swansea Bay area
- Intervening early with cases and contacts to prevent onward transmission
- Keeping essential services in Swansea Bay operational

## **2. BACKGROUND**

Welsh Government published its Test, Trace and Protect Plan on 13<sup>th</sup> May, and expected all Health Boards and Local Authorities to ensure the Programme was operational from 1<sup>st</sup> June 2020. Work has been underway across the Health Board and Local Authority partners since 4<sup>th</sup> May 2020 to mobilise efforts to ensure this was achieved.

### **2.1 Governance for Test, Trace & Protect in Swansea Bay**

The responsibility for implementation of the TTP Programme implementation sits with Health Boards and Local Authorities. To ensure this can be implemented at pace and in line with Welsh Government requirements, a governance structure has been agreed and put in place for Swansea Bay, and a plan has also been prepared. The governance structure has been updated to reflect the Health Board's broader Testing responsibilities and is attached at Appendix 1.

### **2.2 Progress with Implementing Test, Trace & Protect in Swansea Bay**

Daily position statements are produced which outline the activity and issues with implementation. These are currently produced on a manual basis, however, it is expected that this will be automated as the CRM system evolves. In addition, weekly review meetings are taking place across the organisations to discuss lessons learned and progress of the Test, Trace and Protect programme.

A joint communication plan across the region has been developed to amplify the national communication issued by Welsh Government in support of their NHS Test, Trace and Protect Strategy.

#### **(a) Testing**

Capacity for testing / swabbing is available at the Margam Drive Through facility (2 lanes) which has been in place since March and the Drive Through facility at Liberty Stadium (6 lanes) which was opened on 8<sup>th</sup> May. In addition Community Testing

Teams have also been established (2 or 3 depending on demand) to provide home tests and to carry out swabs at care homes. Conservatively, each lane of the drive through facilities can test 75 people per day (9am to 7pm) and each Community Testing Team can carry out 200 swabs per day.

Since the beginning of May to June 11 2020, 9149 tests have been carried out at the two Covid Testing Units (CTUs). The tests fall into the following categories:

- Drive through testing for all critical workers (including care homes staff), plus patients requiring a negative result before a planned procedure.
- Community Testing Team working across the region to test all residents in care homes and testing individuals requiring a negative test before admission to a care home.
- General public booking test appointments via an online portal. This service is available to symptomatic members of the public only, and the Health Board currently offers 60 “slots” per day at the Margam CTU site.

At present, some the testing resource is directed to prioritise a large-scale care homes testing programme which has taken place since May 08 2020. Current demand means that 2 lanes are operational at the Liberty Stadium, although this can be increased as demand requires. The need to follow UK Government testing processes, which do not interface with those mandated in Wales, restricts capacity. However, workarounds are in place to enable referrals to be accepted and processed. A further current limitation on demand is due to awaiting slots to be added to the Gov.Uk portal for the public to access.

The initial testing of all residents and staff in care homes across Swansea and Neath Port Talbot will complete its first phase on 21<sup>st</sup> June 2020. Welsh Government has also directed care homes to take up weekly testing of staff using a new online test-kit requesting portal – the portal will go live on June 15 2020, with each Health Board region being allocated one day per week for a four week period for care homes to book test kits for all staff. Swansea Bay care homes have been allocated Saturday to access the portal.

Military Testing Units have also been deployed in Wales in May, although their operation differs from that in England, due to inability for legal/insurance reasons to carry out swabbing and entering care homes. The Health Board is likely to receive support from an additional Military Testing Unit in June.

Guidance on testing has been rapidly evolving and multiple announcements from Welsh Government and Public Health Wales regarding changes to eligibility for testing have resulted in the need for quick reaction and changes in approaches to testing. The initial areas of focus have been on care homes testing and widening the scope to all critical workers across the region. Testing for education staff to support school reopening will commence 15<sup>th</sup> June.

Information received from Welsh Government showed that up to 7<sup>th</sup> June, Swansea Bay was the second highest performing LHB in terms of absolute numbers of tests undertaken at the Mass Testing Centres and that our aggregate performance on sampling has consistently been the highest in Wales. However, delays in scaling up

our testing capacity and instability in the workforce staffing the testing units mean that our performance is likely to improve at a slower rate over the next period.

### **(b) Trace & Protect**

On a multiagency basis the approach agreed across the Swansea Bay area for the Trace and Protect element of the programme is as follows:

- Teams will be organised by each Local Authority and will provide a call centre function for trace and protect activity
- Teams will initially be staffed by Local Authority and Health Board staff working to a national standard operating process and to national role descriptors supported by national e-learning
- Call centres will be virtual, utilising staff who can work from home in most cases and operate from 9am to 5pm, 7 days a week

A Regional team for Swansea Bay has been established, led by Directors of Public Protection from the Local Authorities and the Director of Public Health. It provides advice and support to local teams and oversees the management of outbreaks in the area. The demands on the specialist health protection staff have been significant during the first two weeks of TTP, as most cases have been identified as health and care staff. It has, however, meant that in depth investigations have been able to be undertaken of cases. A revised governance structure has been agreed with the Multi-Agency Regional Response Team Workstream reporting into the Multi-Agency Test, Trace & Protect Silver Group.

The second phase of work force teams became operational on 8<sup>th</sup> June 2020, and this is being scaled up to have the full teams in place by 1<sup>st</sup> of July. Laptops and associated equipment have been provided by the Health Board for those teams to ensure they can become operational when required. With services coming back on line across LAs and the Health Board a number of key staff will be returning to their substantive roles, and therefore a recruitment campaign is being implemented to secure the full complement of staffing required for the duration of the campaign.

The All Wales Contact Tracing System (CRM) was due to go live on 8<sup>th</sup> June, however, due to technical issues it went live on 9<sup>th</sup> June. Training videos and links have been published for staff. The development and implementation of a bespoke system at such speed is of significant credit to both national and local teams.

### **2.3 Next Steps**

Due to the requirement to implement the Test, Trace and Protect programme so rapidly, since preparing this report significant changes will have already been implemented and so a verbal update will be given at the Health Board meeting

## **3. GOVERNANCE AND RISK ISSUES**

A RAID (risk, action, issues and decisions) log is being maintained for the Test, Trace and Protect programme which identifies the following as the main risks for the programme:

- Identification of appropriate staff, including those with communicable disease skills, to run testing, trace and protection activities, initially from repurposed

health and local authority staff, but likely to have to source external staff as business as usual services are increasingly reintroduced.

- Agreement of funding by Welsh Government for additional costs of TTP activities.
- Availability of sufficient laboratory capacity to meet demand from testing activity in a timely manner.

Actions have been identified to mitigate these risks, but currently these are still extant.

#### **4. FINANCIAL IMPLICATIONS**

There will be financial impacts for the Health Board of running the additional testing capacity planned as well as for the Local Authorities in running the Trace and Protect arrangements. These are being quantified and discussions underway with Welsh Government to ensure these are met.

#### **5. RECOMMENDATIONS**

Members are asked to:

- **NOTE** the Welsh Government requirements for the Test, Trace and Protect programme
- **NOTE** the progress made across Swansea Bay in implementing the Test, Trace and Protect programme
- **NOTE** the risks associated with implementation of the programme
- **NOTE** that a further verbal update on progress will be given at the Health Board meeting

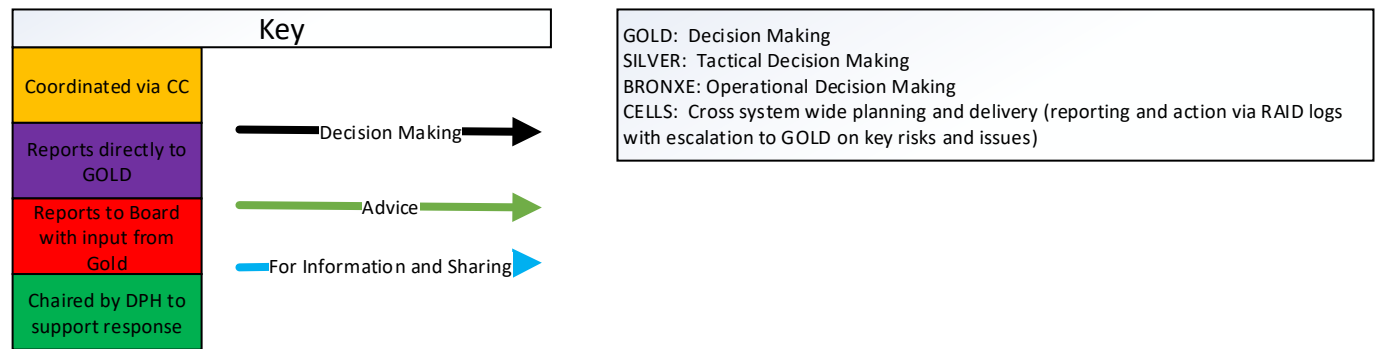
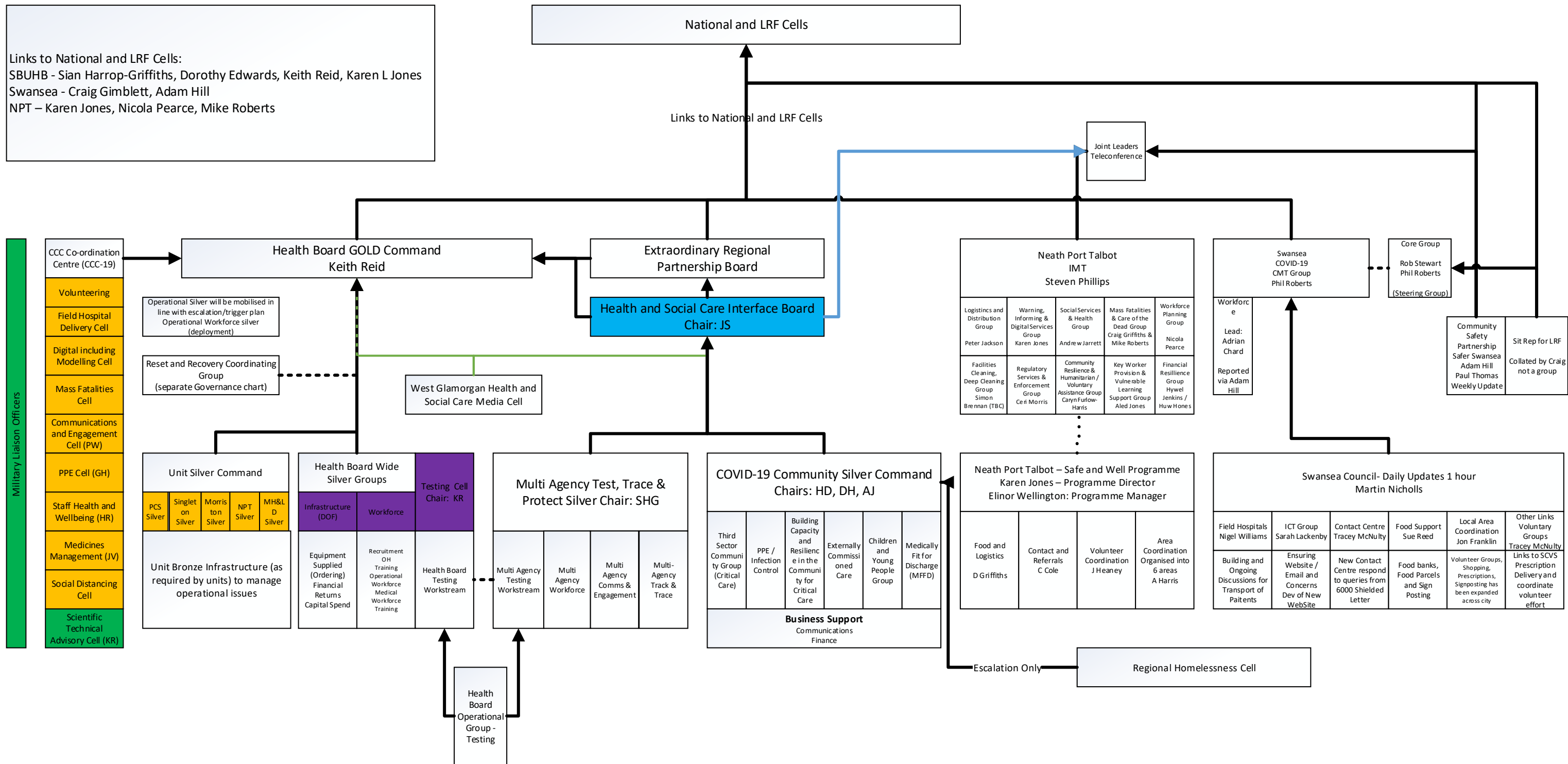
<b>Governance and Assurance</b>		
<b>Link to Enabling Objectives</b> (please choose)	<b>Supporting better health and wellbeing by actively promoting and empowering people to live well in resilient communities</b>	
	Partnerships for Improving Health and Wellbeing	<input checked="" type="checkbox"/>
	Co-Production and Health Literacy	<input type="checkbox"/>
	Digitally Enabled Health and Wellbeing	<input checked="" type="checkbox"/>
	<b>Deliver better care through excellent health and care services achieving the outcomes that matter most to people</b>	
	Best Value Outcomes and High Quality Care	<input checked="" type="checkbox"/>
	Partnerships for Care	<input checked="" type="checkbox"/>
	Excellent Staff	<input checked="" type="checkbox"/>
	Digitally Enabled Care	<input checked="" type="checkbox"/>
	Outstanding Research, Innovation, Education and Learning	<input type="checkbox"/>
<b>Health and Care Standards</b>		
(please choose)	Staying Healthy	<input checked="" type="checkbox"/>
	Safe Care	<input type="checkbox"/>
	Effective Care	<input type="checkbox"/>
	Dignified Care	<input type="checkbox"/>
	Timely Care	<input type="checkbox"/>
	Individual Care	<input type="checkbox"/>
	Staff and Resources	<input checked="" type="checkbox"/>
<b>Quality, Safety and Patient Experience</b>		
<p>Monitoring will be put in place of people's experience of the Test, Trace and Protect programme so that action can be taken to improve any of the issues raised.</p> <p>Response times are being set for each part of the process so that adherence to these can also be monitored and actions taken if necessary to improve performance.</p>		
<b>Financial Implications</b>		
<p>There will be financial impacts for the Health Board of running the additional testing capacity planned as well as for the Local Authorities in running the Trace and Protect arrangements. These are being quantified and discussions planned with Welsh Government to ensure these are met.</p>		
<b>Legal Implications (including equality and diversity assessment)</b>		
<p>The Swansea Bay programme outlined above meets the requirements of the Welsh Government's Test, Trace and Protect Programme.</p>		
<b>Staffing Implications</b>		
<p>Staffing for the Test, Trace and Protect Programme across Swansea Bay will be based on repurposing health and local authority staff in the first instance but as these staff are required to bring core services back on line, there is likely to be a need to recruit staff externally to fulfil these roles and a recruitment campaign is being finalised.</p>		
<b>Long Term Implications (including the impact of the Well-being of Future Generations (Wales) Act 2015)</b>		
<p>The Swansea Bay Test, Trace and Protect programme aims to prevent the spread of coronavirus, ensure early intervention with cases and contacts to prevent onward transmission and to keep essential services operational, so ensuring that the wellbeing of Future Generations is safeguarded. The programme is aimed to operate initially for 12 months, focused on prevention, integration and collaboration between partner organisations with the involvement of the public in taking required action to reduce risks.</p>		
<b>Report History</b>	No reports have been presented on this topic.	

<b>Appendices</b>	Appendix A – Governance Structure
-------------------	-----------------------------------





# COVID-19 GOVERNANCE ACROSS WEST GLAMORGAN



# WALES WIDE GOVERNANCE

