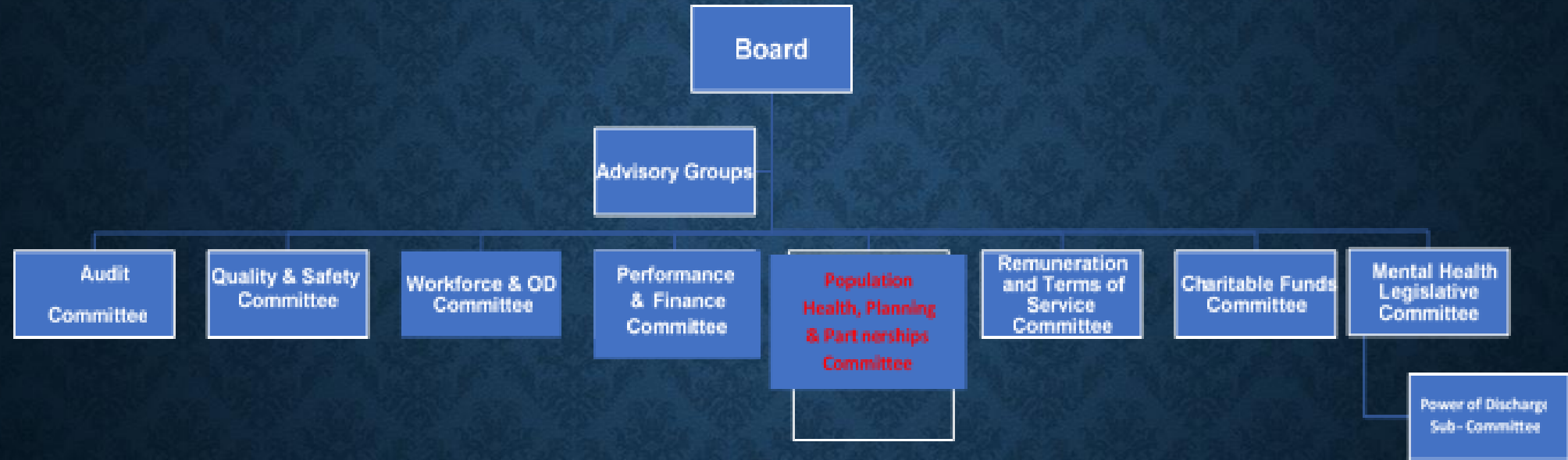


PROPOSED COMMITTEE STRUCTURE FOR 2023/24

CURRENT COMMITTEE STRUCTURE



PROPOSED COMMITTEE STRUCTURE 2023/34



Main changes:

- Stand down Health & Safety Committee – work programme to be absorbed into Quality & Safety Committee
- Creation of a Population Health, Planning & Partnerships Committee
- Finance & Performance Committee to also oversee estates and capital
- Digital to move to Workforce Committee

Working through IM Membership with three IM's per Committee (except RATS)

POPULATION HEALTH GOVERNANCE & REPORTING ARRANGEMENTS

□ Board: Strategy

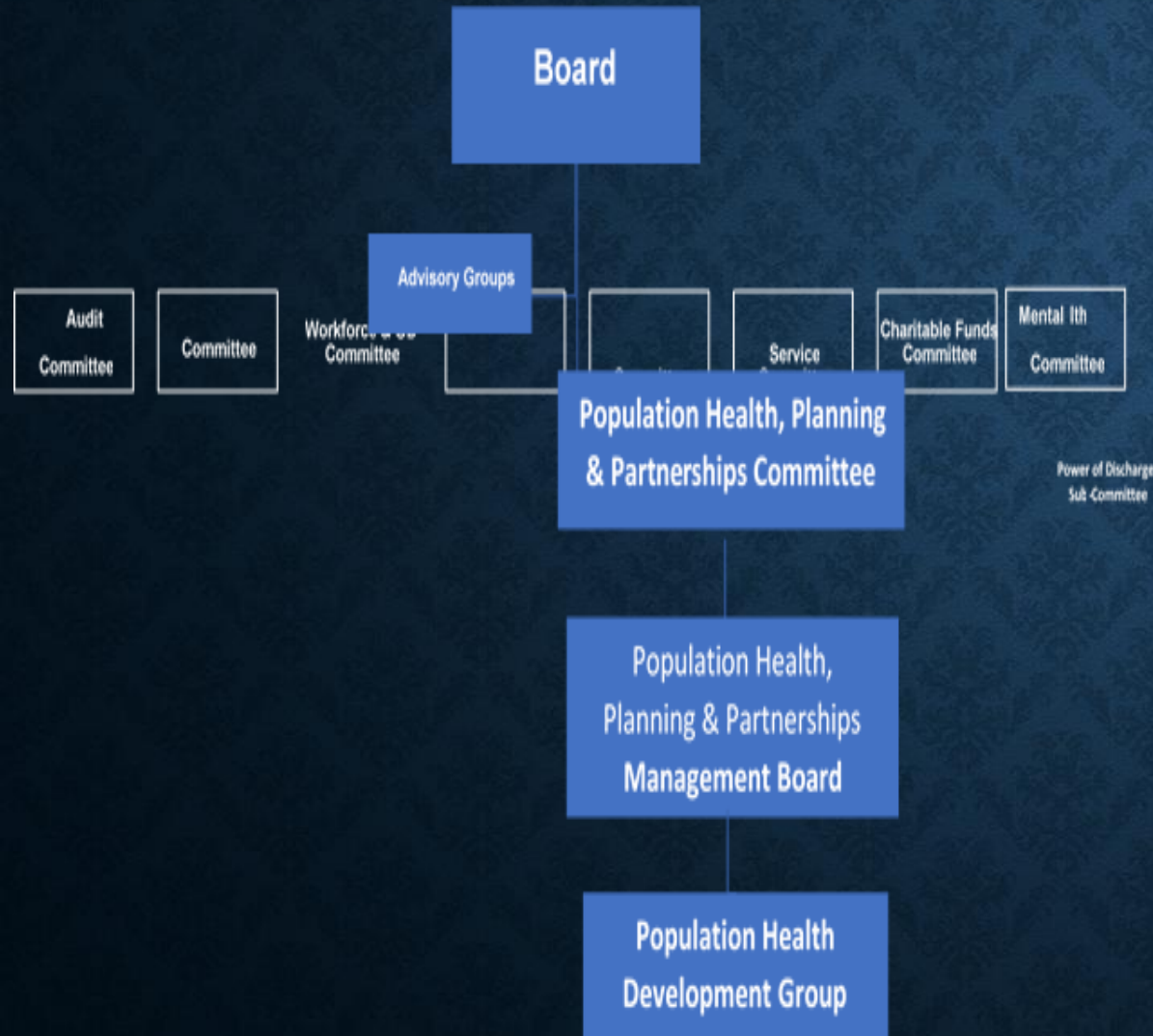
□ Committee/Management Board

Key areas of assurance focus

- Risk register in relation to planning, population health and partnerships
- Alignment of plans underpinning the IMTP both internal (workforce, estates, digital) and external (RPB, Clusters)
- Population health priorities
- Compliance with WBFGA and Socio-economic Duty for Wales
- Structure to deliver population health (internal and external)
- Partnerships as delivery mechanisms (eg RPB)
- Partnerships for oversight of key priorities (PSB)
- Health board responsiveness to partnership requirements (PSB, RPB, APB)

To Consider

- Frequency of meetings
- Membership
- Partners (who does this cover)



SBUHB POPULATION HEALTH ORGANISATIONAL GOVERNANCE

