


	ABM University Health Board
Health Board	Meeting on: 26th January 2017

**Subject:** Performance Report- Healthier Communities



# ABMU Key Priorities : Healthier Communities

Improved Performance	8 Measures
Sustained Performance	0 Measures
Decline in Performance	1 Measures
Trend	

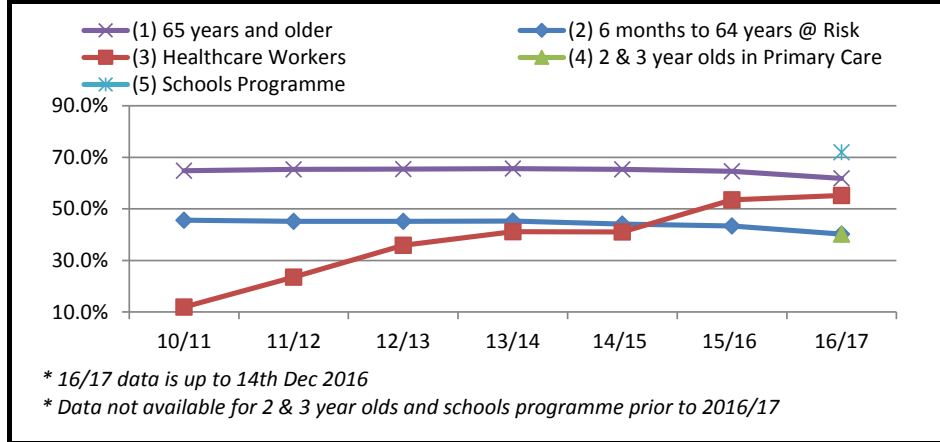
Measures	Period	Value	Target Attained	Trend
% uptake of the influenza vaccination - aged 65 years and over	Up to 14/12/2016	61.8%	✗	↑
% uptake of the influenza vaccination - under 65 years in at risk groups	Up to 14/12/2016	40.2%	✗	↑
% uptake of the influenza vaccination - healthcare workers	Up to 14/12/2016	55.2%	✓	↑
% uptake of the influenza vaccination - 2 & 3 year olds	Up to 14/12/2016	40.2%	✗	
% uptake of the influenza vaccination - Schools programme	Up to 14/12/2016	39.2%	✗	
% uptake 4 in 1 pre school booster (at age 4)	Sep-16	88.7%	✗	↑
% uptake Hib/MenC booster (at age 4)	Sep-16	94.8%	✗	↓
% uptake Hib/MenC booster (at age 4)	Sep-16	92.2%	✗	↑
% up to date in schedule at 4th birthday	Sep-16	86.4%	✗	↑
% Welsh resident smokers make a quit attempt via Smoking Cessation Services	Oct-16	1.50%	✗	↑
% Welsh resident smokers CO validated as successfully quitting at 4 weeks	Oct-16	62.4%	✓	↑

**STAYING HEALTHY - PEOPLE IN WALES ARE WELL INFORMED AND SUPPORTED TO MANAGE THEIR OWN PHYSICAL AND MENTAL HEALTH**

**Measure 1:** % uptake of the Seasonal Flu vaccine 65 years and older, **Measure 2:** % uptake of the Seasonal Flu vaccine 6 months to 64 years @ Risk, **Measure 3:** % uptake of the Seasonal Flu vaccine in Healthcare workers, **Measure 4:** % uptake of 2 & 3 year olds, **Measure 5:** % uptake of the Schools Programme.

<b>Strategic Aim : Healthier Communities</b>		<b>Strategic Change Programme: Changing for the Better: Staying Healthy</b>		<b>Executive Lead : Sara Hayes</b>	
<b>Period : Dec 2016</b>	<b>IMTP Profile Target :</b> (1)75% (2) 75% (3) 60%	<b>WG Target :</b> (1)75% (2) 75% (3) 50%	<b>Current Status :</b>	<b>Movement :</b>	

**Current Trend: 2010 - Dec 16**



**How are we doing ?**

- Uptake is continuing to increase weekly for at risk groups-65+, under 65s and 2 and 3 year olds.
- For 2 and 3 year olds we are currently achieving higher uptake than the end of season uptake for 2015/16 (38% vs 34%). Several practices have made considerable improvements in uptake this year compared to last.
- Staff campaign achieved WG target-currently 55.2%. Will continue to offer the vaccine to staff until March 2017.
- Schools campaign ages 4-7 has achieved approximately 72%-currently higher uptake than end of season 2015/16 (62%)

**Benchmark**

2016/17	ABM	AB	BCU	C&V	CTaf	HDdA	Powys	Wales
(1) 65+	61.8%	65.4%	65.9%	65.5%	62.3%	60.6%	61.9%	63.8%
(2) < 65@ Risk	40.2%	46.5%	45.4%	44.5%	42.0%	39.4%	42.7%	43.4%
(3) Health Care Workers	55.2%	<i>*Current uptake for other Health Boards not available</i>						
(4) 2 & 3 Year Olds	40.2%	40.4%	46.0%	42.3%	33.1%	36.4%	45.2%	40.9%
(5) School Programme	72.0%							

\* Data is up to 14th Dec 2016

**What actions are we taking?**

- Approximately 6 practices have held fluenz parties. Evaluation information has been requested.
- Monthly flu data being distributed to practice flu leads in PDF format and weekly IVOR link distributed throughout season.
- Awareness raising sessions attended with British Lung Foundation for those with chronic respiratory illness/carers.
- Presentation at Carers Day in Swansea delivered by Consultant Lead for promotion of vaccination.
- Agreed strategy for Primary Care Managers following up practices with low uptake.
- Letter sent to practices from DPH highlighting low uptake of under 65s at risk groups and encouraging continued efforts and focus on this group.

**How do we compare with our peers?**

- 2-3 year olds-ranked 4th
- 65+ ranked 6th
- Under 65s at risk-ranked 6th
- ABM is the only HB to meet WG target of 50% in 6 week campaign

**What are the main areas of risk?**

- Uptake in at risk groups under 65s is particularly low across Wales and ABM is 6th out of 7 HBs for uptake.
- No budget has been allocated to local public health team for flu for 2016/17 season. Unable to fund further advertising or resources or fluenz parties.

Source : Public Health Wales Vaccine Preventable Disease Programme and Communicable Disease Surveillance Centre. IVOR (Influenza Vaccine Online Reporting)

**STAYING HEALTHY - PEOPLE IN WALES ARE WELL INFORMED AND SUPPORTED TO MANAGE THEIR OWN PHYSICAL AND MENTAL HEALTH**

**Measure 1:** % uptake 4 in 1 pre school booster (at age 4), **Measure 2:** % uptake Hib/MenC booster (at age 4)

**Measure 3:** % uptake 2nd MMR dose (at age 4), **Measure 4:** % Up to date in schedule at 4th birthday.

**Strategic Aim : Healthier Communities**

**Strategic Change Programme: Changing for the Better: Staying Healthy**

**Executive Lead : Sara Hayes**

**Period : Sep 16**

**IMTP Profile Target :**

**WG Target :**

**95% or above**

**Current**

**Status :**



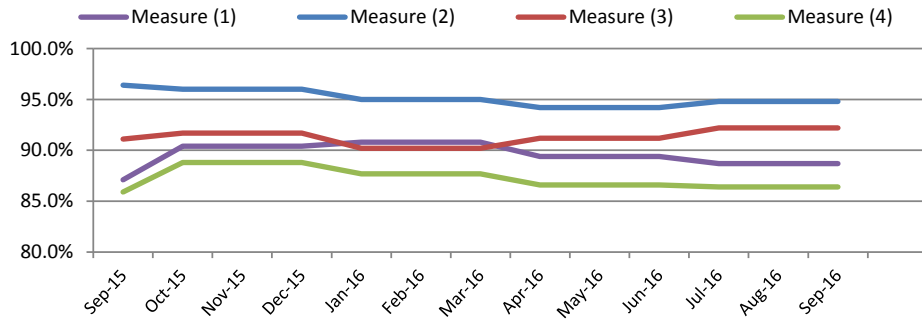
**Movement :**



**Improving**

**Current Trend: Sep 15 - Sep 16**

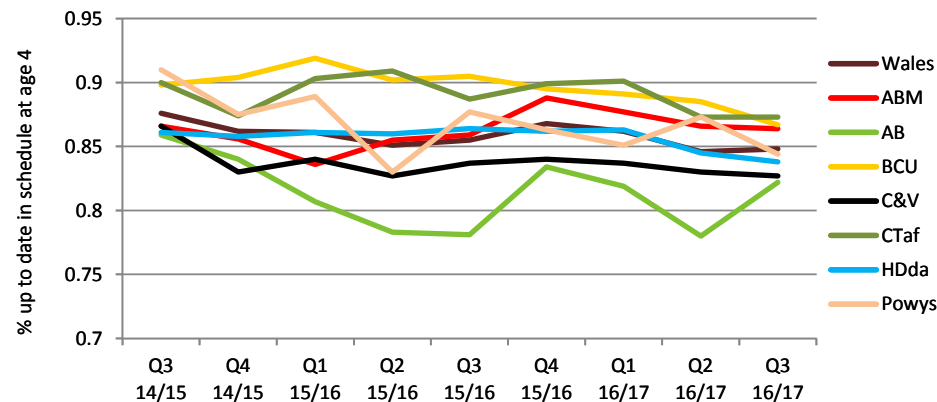
**How are we doing ?**



- There is a slight decrease in uptake rates of the 4 in 1 during the last quarter
- There is a 1% increase in uptake rates of the MMR vaccine by 4 yrs of age and a small increase in uptake of the Hib / Men C vaccine
- Overall there is a slight reduction in the number of children who are up to date with immunisations at 4 yrs - this is in line with the majority of other HB areas.

**Benchmark**

**What actions are we taking?**



- Waiting lists are monitored monthly. Any practices with persistently high waiting lists are highlighted to the relevant primary care support manager
- Health visiting managers are receiving monthly reports of children who have outstanding immunisations for discussion with the named HV, who in turn are working closely with GP practices.
- Individual GP Practice immunisation profiles have been developed and have been met with a positive response. They contain uptake data on the 4 in 1, Hib Men C and MMR 2 at age 4 yrs. Number of remaining children to vaccinate to reach target will also be included. This approach has proved helpful in increasing vaccination uptake in other HB areas.

**How do we compare with our peers?**

**What are the main areas of risk?**

- No Welsh Health board is above 95% at 4 yrs.
- Currently ABM are above the Welsh average for being up to date at 4 yrs

- Currently MMR uptake rates are below 95% which is required for herd immunity
- Health Visitors have received a separate report of all children currently on their caseloads who have not had 1 or 2 doses of MMR for action.

Source : Vaccine Uptake in Children in Wales July to September 2016 (COVER 120)

**STAYING HEALTHY - PEOPLE IN WALES ARE WELL INFORMED AND SUPPORTED TO MANAGE THEIR OWN PHYSICAL AND MENTAL HEALTH**

**Measure 1: % Welsh resident smokers make a quit attempt via Smoking Cessation Services**

**Measure 2: % Welsh resident smokers who are Co validated as successfully quitting at 4 weeks**

**Strategic Aim : Healthier Communities**

**Strategic Change Programme: Changing for the Better: Staying Healthy**

**Executive Lead : Sara Hayes**

**Period : Oct 16**

**IMTP Profile Target :**

**(1) 2.5% (2) 40%**

**WG Target :**

**(1) 5% and above (2) 40% and above**

**Current**

**Status : N/A**

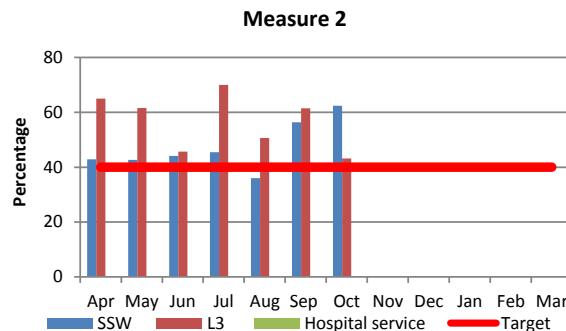
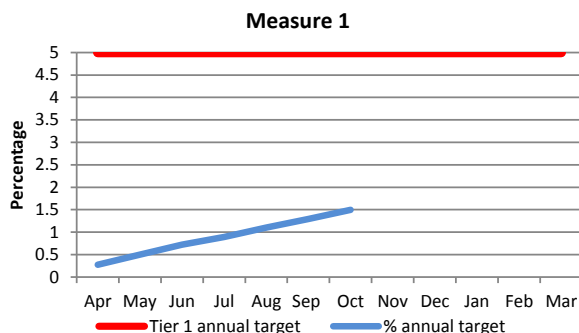
**Movement :**



**Stable**

**Current Trend: 2016-2017 (monthly)**

**How are we doing ?**



- The most recent data from 2014/2015 estimates that 19.0% of ABMU's adult population, smoke. Smoking rates have decreased faster in ABMU than for Wales, from 23% in 2013/14 (Wales 22%) to 19% in 2015 (Wales 20%).
- To achieve the 5% Tier 1 target 4119 smokers need to be treated in stop smoking services per year, with an average of 343 smokers treated per month. ABMU has treated 1233 smokers against the cumulative monthly target of 2403, achieving to date 1.5% of the overall target. This is an improved performance of 0.5% compared with the same time last year (October 2015/16), where 938 smokers had been treated and 1.0% of the target was achieved.

**Benchmark**

**What actions are we taking?**

**Treated Smokers**

LHB	Current		Previous	
	Q1 16/17	Q1 15/16	Q1 16/17	Q1 15/16
Wales	0.9%	0.6%	↑	0.6%
ABM	0.7%	0.4%	↑	0.4%
AB	0.9%	0.5%	↑	0.5%
BCU	1.2%	0.9%	↑	0.9%
C&V	0.4%	0.4%	↑	0.4%
CTaf	1.1%	0.9%	↑	0.9%
HDda	0.7%	0.5%	↑	0.5%
Powys	0.6%	0.5%	↑	0.5%

**Co Validated**

LHB	Current		Previous	
	Q1 16/17	Q1 15/16	Q1 16/17	Q1 15/16
Wales	38.4%	38.1%	↑	38.1%
ABM	47.2%	44.8%	↑	44.8%
AB	35.0%	36.8%	↓	36.8%
BCU	29.5%	32.3%	↓	32.3%
C&V	51.4%	36.5%	↑	36.5%
CTaf	40.7%	40.9%	↓	40.9%
HDda	52.2%	50.2%	↑	50.2%
Powys	47.4%	37.8%	↑	37.8%

1. ABMU HB Smoking Cessation Delivery and Recovery Plan 2016-2020 has been developed in conjunction with ABMU Smoking Cessation Service providers. Director of Public Health will present this to Executive Team and Board in January 2017.
2. Work being progressed to integrate Tobacco priorities across Delivery Unit plans and Health Board IMTP
3. ABMU's Local Public Health Team (LPHT) and the ABMU's Primary and Community Services Delivery Unit are working collaboratively to analyse spend against level 2 and level 3 community pharmacy schemes.
4. 'Time to Quit' Hospital Cessation Service is under resourced at present. Recruitment in process to fill advisor post.
5. Smoke free school gates initiative launched across Swansea primary schools. Funding secured to roll out to Bridgend and Neath Port Talbot areas.

**How do we compare with our peers?**

**What are the main areas of risk?**

The Recovery Plan outlines the financial implications and risk associated with improving performance of cessation services to meet the cessation target. The current budget of £253,000 allocated for level 2 and level 3 community pharmacy cessation services hosted in the Primary and Community Service Delivery Unit is inadequate to meet current performance and increase growth of service provision required to meet the target over the next three years.