

	ABM University Health Board
Health Board	Meeting on: 30th March 2017

Subject:	Performance Report- Healthier Communities
-----------------	---



ABMU Key Priorities : Healthier Communities

Improved Performance

8 Measures

Sustained Performance

0 Measures

Decline in Performance

1 Measures

Trend

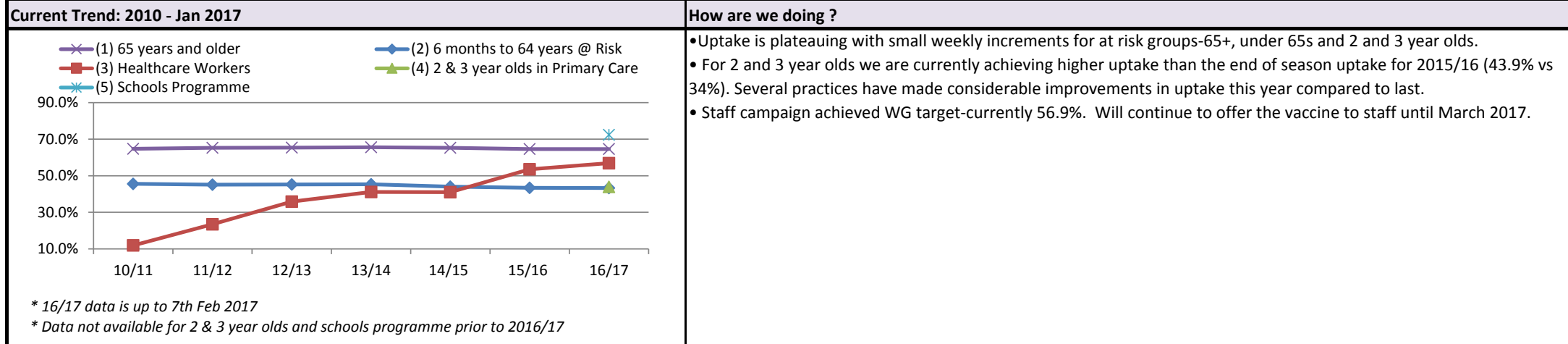


Measures	Period	Value	Target Attained	Trend
% uptake of the influenza vaccination - aged 65 years and over	Up to 07/02/2017	64.6%	✗	↑
% uptake of the influenza vaccination - under 65 years in at risk groups	Up to 07/02/2017	43.3%	✗	↑
% uptake of the influenza vaccination - healthcare workers	Up to 07/02/2017	56.9%	✓	↑
% uptake of the influenza vaccination - 2 & 3 year olds	Up to 07/02/2017	43.9%	N/A	
% uptake of the influenza vaccination - Schools programme	Up to 07/02/2017	72.4%	N/A	
% uptake 4 in 1 pre school booster (at age 4)	Dec-16	90.0%	✗	↑
% uptake Hib/MenC booster (at age 4)	Dec-16	95.3%	✓	↓
% uptake 2nd MMR dose (at age 4)	Dec-16	90.5%	✗	↑
% up to date in schedule at 4th birthday	Dec-16	87.7%	✗	↑
% Welsh resident smokers make a quit attempt via Smoking Cessation Services	Dec-16	1.8%	✗	↑
% Welsh resident smokers CO validated as successfully quitting at 4 weeks	Dec-16	56.3%	✓	↑

STAYING HEALTHY - PEOPLE IN WALES ARE WELL INFORMED AND SUPPORTED TO MANAGE THEIR OWN PHYSICAL AND MENTAL HEALTH

Measure 1: % uptake of the Seasonal Flu vaccine 65 years and older, **Measure 2:** % uptake of the Seasonal Flu vaccine 6 months to 64 years @ Risk, **Measure 3:** % uptake of the Seasonal Flu vaccine in Healthcare workers, **Measure 4:** % uptake of 2 & 3 year olds, **Measure 5:** % uptake of the Schools Programme.

Strategic Aim : Healthier Communities		Strategic Change Programme: Changing for the Better: Staying Healthy		Executive Lead : Sara Hayes	
Period : Jan 2017	IMTP Profile Target : (1)75% (2) 75% (3) 60%	WG Target : (1)75% (2) 75% (3) 50%		Current Status : ✗	Movement : ➡ Stable



Benchmark									What actions are we taking?
2016/17	ABM	AB	BCU	C&V	CTaf	HDdA	Powys	Wales	<ul style="list-style-type: none">Approximately 4 practices have held flu vaccination parties. Evaluation report will be completed by March 2017.Monthly flu data still being distributed to practice flu leads in PDF format and weekly IVOR link distributed throughout season.
(1) 65+	64.6%	67.8%	68.5%	68.5%	64.6%	63.0%	63.7%	66.3%	
(2) < 65@ Risk	43.3%	49.5%	48.7%	48.1%	45.0%	42.0%	45.7%	46.5%	
(3) Health Care Workers	56.9%	*Current uptake for other Health Boards not available							
(4) 2 & 3 Year Olds	43.9%	45.0%	49.7%	45.5%	42.4%	38.5%	48.8%	45.1%	
(5) School Programme	72.4%	67.6%	67.3%	58.2%	74.6%	67.5%	68.8%	67.6%	
* Data is up to 7th Feb 2017									

How do we compare with our peers?	What are the main areas of risk?
<ul style="list-style-type: none"> 2-3 year olds-ranked 5th 65+ ranked 4th Under 65s at risk-ranked 6th School programme-ranked 2nd 	<ul style="list-style-type: none"> Uptake in at risk groups under 65s is particularly low across Wales and ABMU is 6th out of 7 HBs for uptake, acheiving less than the Wales average.

Source : Public Health Wales Vaccine Preventable Disease Programme and Communicable Disease Surveillance Centre. IVOR (Influenza Vaccine Online Reporting)

STAYING HEALTHY - PEOPLE IN WALES ARE WELL INFORMED AND SUPPORTED TO MANAGE THEIR OWN PHYSICAL AND MENTAL HEALTH

Measure 1: % Welsh resident smokers make a quit attempt via Smoking Cessation Services

Measure 2: % Welsh resident smokers who are Co validated as successfully quitting at 4 weeks

Strategic Aim : Healthier Communities

Strategic Change Programme: Changing for the Better: Staying Healthy

Executive Lead : Sara Hayes

Period : Dec 2016

IMTP Profile Target :

(1) 2.5% (2) 40%

WG Target :

(1) 5% and above (2) 40% and above

Current

Status : N/A

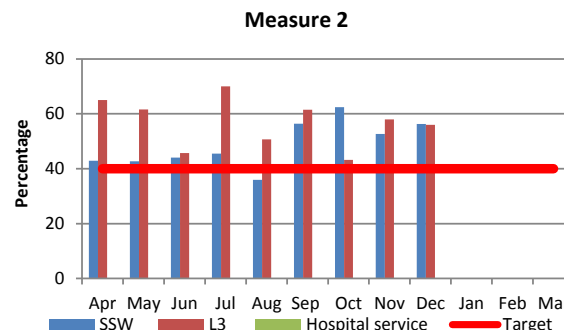
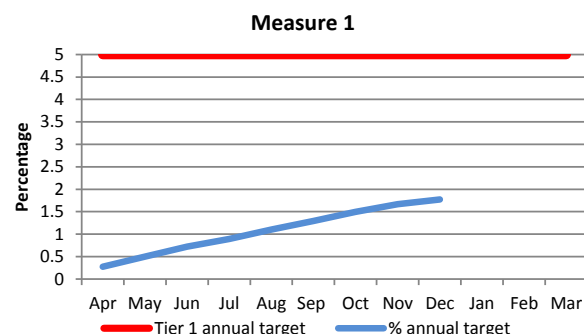
Movement :



Stable

Current Trend: 2016-2017 (monthly)

How are we doing ?



- The most recent data from 2014/2015 estimates that 19.0% of ABMU's adult population, smoke. Smoking rates have decreased faster in ABMU than for Wales, from 23% in 2013/14 (Wales 22%) to 19% in 2015 (Wales 20%).
- To achieve the 5% Tier 1 target 4119 smokers need to be treated in stop smoking services per year, with an average of 343 smokers treated per month. ABMU has treated 1460 smokers against the cumulative monthly target of 3069, achieving to date 1.8% of the overall target.

Benchmark

What actions are we taking?

Treated Smokers

LHB	Current	Previous
	Q1-Q2 16/17	Q1-Q2 15/16
Wales	1.5%	↑ 1.2%
ABM	1.3%	↑ 0.8%
AB	1.4%	↑ 0.5%
BCU	2.1%	↑ 1.8%
C&V	0.7%	↓ 0.7%
CTaf	2.1%	↑ 1.8%
HDda	1.2%	↑ 1.0%
Powys	1.1%	↓ 1.3%

Co Validated

LHB	Current	Previous
	Q1-Q2 16/17	Q1-Q2 15/16
Wales	41.1%	↑ 37.3%
ABM	50.2%	↑ 42.9%
AB	41.4%	↑ 36.7%
BCU	30.5%	↓ 32.1%
C&V	54.1%	↑ 36.2%
CTaf	39.1%	↑ 37.3%
HDda	57.3%	↑ 48.9%
Powys	47.2%	↑ 39.3%

1. ABMU HB Smoking Cessation Delivery and Recovery Plan 2016-2020 has been developed in conjunction with ABMU Smoking Cessation Service providers. Director of Public Health presented this to Executive Team and Board in January 2017
2. Work being progressed to integrate Tobacco priorities across Service Delivery Unit plans and Health Board Annual plan
3. Work being undertaken to determine the impact on smoking prevalence reduction on health service provision and inequalities
4. 'Time to Quit' Hospital Cessation Service remains under resourced at present. Advisor post now recruited and awaiting start. Service Manager post remains unfilled
5. Smoke free site policy being refreshed. Recommendations for improved compliance with Policy scoped and will be presented to Executive Team in February
6. Smoke free school gates initiative launched across Bridgend primary schools (February 2017). Roll out phase to Neath Port Talbot in preparation

How do we compare with our peers?

• As at the end of quarter two 2016/17, which is the latest published data available, ABMU was above the all-Wales position for the percentage of resident smokers who are co-validated as successfully quitting at 4 weeks but below the all-Wales position for the percentage of resident smokers making a quit attempt via smoking cessation services.

What are the main areas of risk?

The Recovery Plan outlines the financial implications and risk associated with improving performance of cessation services to meet the cessation target. The current budget of £253,000 allocated for level 2 and level 3 community pharmacy cessation services hosted in the Primary and Community Service Delivery Unit is inadequate to meet current performance and increase growth of service provision required to meet the target over the next three years.

Source : NHS WALES OUTCOMES FRAMEWORK, ALL WALES PERFORMANCE SUMMARY (FEBRUARY 2017)