



GIG
CYMRU
NHS
WALES

Bwrdd Iechyd Prifysgol
Abertawe Bro Morgannwg
University Health Board



Meeting Date	28 March 2019	Agenda Item	5.6 (i)	
Report Title	ARCH Portfolio Summary			
Report Author	Karen Stapleton, Head of Strategy and Service Planning			
Report Sponsor	Joanne Abbott-Davies, Assistant Director of Strategy and Partnerships			
Presented by	Siân Harrop-Griffiths, Director of Strategy			
Freedom of Information	Open			
Purpose of the Report	This paper provides an update on the ARCH Programme Board meeting held on 21 st January 2019.			
Key Issues	<p>The ARCH Programme Board meets quarterly and receives a detailed report from the Chair of the ARCH Delivery and Leadership Group at each meeting.</p> <p>Key points to note in this report are:</p> <ul style="list-style-type: none"> • Feedback from the Regional Neurological Conditions Service Model • The proposed changes to the leadership of the Wellbeing Board • The University membership of the ARCH Programme Board 			
Specific Action Required <i>(please ✓ one only)</i>	Information	Discussion	Assurance	Approval
	✓			
Recommendations	<p>Members are asked to:</p> <ul style="list-style-type: none"> • NOTE the update on the ARCH Portfolio 			

ARCH PORTFOLIO UPDATE

1. INTRODUCTION

The purpose of this report is to provide the ABMU Board with an update on matters reported to the ARCH Programme Board in January 2019.

2. BACKGROUND

In January 2019 the ABMU Health Board received a report which provided an overview of the ARCH portfolio design, and governance arrangements as well progress and achievements to date.

The ARCH Programme Board meets quarterly and receives a detailed report from the Chair of the ARCH Delivery and Leadership Group at each meeting.

Key points to note in this report are:

- Feedback from the Regional Neurological Conditions Service Model
- The proposed changes to the leadership of the Wellbeing Board
- The University membership of the ARCH Programme Board

3. ASSESSMENT

The ARCH Programme Board receives updates on each of the programmes on a quarterly basis.

Service Transformation Programme

In November 2018 a new proposed regional service model for neurological services, setting out a clear plan for transforming services in line with 'A Healthier Wales' was presented to the ARCH Service Transformation Board.

ARCH established a Neurological Conditions project group in April 2017, chaired by Peter Skitt, Hywel Dda Ceredigion County Director. The group has had strong clinical membership across all disciplines and across the region creating a fully multi-disciplinary approach to development of the proposed service model.

In January 2019, a presentation on the Regional Neurological Conditions Service Model was provided by the Chair of the Neurological Conditions Project Group. The Project Group have identified three key work streams for service re-design - headache, epilepsy and Functional Neurological Disorders (FND) and a standardised approach to headache referrals across the region has been agreed, along with a Neurological in-reach model.

The proposed service model has been developed through a collaborative approach, from across the region with input from all relevant disciplines.

The proposed model will move to:

- A single service managed on a regional basis, prioritising resources where the need is and working across the traditional Health Board boundaries;
- Work closer with our Primary Care practitioners, supporting them in their delivery of services closer to the patients home;
- Encouraging a greater emphasis on self-management by patients, reducing the number of patients coming through the system;
- Offering greater support to those that do come in to hospital and discharging again and back on the road to recovery more quickly;
- Sharing the resources appropriately on a regional basis to overcome areas of staff shortages through. However, this requires a functioning regional approach to service delivery, governance and management.

Peter Skitt was pleased to report that a shared vision for a regional service had been reached and that the proposed service model has been agreed in principle and a fully costed model will now be developed. The fully costed model will demonstrate the impact and benefits of the proposed change.

The ARCH Programme Board was asked to note the development of the model to date. The Board were highly complimentary about the progress made and requested that the lessons learned in this process are analysed and circulated for others to learn from.

Progress in other Service Transformation Projects (Cardiology, Digitisation, Hyper Acute Stroke Unit (HASU), Pathology and Interventional Radiology) were noted.

Wellbeing Programme

It was reported to the Board that the Wellbeing Board has benefited from the active role that Directors of Public Health from both Health Boards have been taking. It was recently announced that Leighton Phillips, current co-chair of the Wellbeing Board, will be joining Hywel Dda University Health Board as Deputy Director Research and Innovation. The future chairing of the Wellbeing Board was raised and the Board were advised that a meeting was scheduled to discuss this. The Terms of Reference for the board, the links with University and the work plan going forward would also be agreed.

Workforce, Skills and Education programme

There has been positive engagement with both Health Board Directors of Workforce and Organisational Development (OD) in recent months. Since the last ARCH Programme Board in October 2018, both Directors have met with John Gammon, Chair of the Workforce, Skills and Education Board on regional priorities.

Quality and service improvement leads across the three partners have met to discuss the scope of the 'ARCH-i' project and frame it in the context of current organisational priorities. This work will now be known as the 'Regional Network of Improvers' project. A more detailed update will be provided to the next ARCH Programme Board meeting in April 2019.

Research, Enterprise and Innovation

ARCH hosted a zone at Swansea University Medical Schools' COLLABORATE Event on October 17th 2018. The event brought together the Life Science Community, Industry, Academia and Health. ARCH utilised this opportunity to explore with experts in these fields the opportunities within the South West Wales Life Science Campus Network and the Digital Health Economy.

Accelerate

This is a pan Wales programme and its components are Life Sciences Hub Wales (lead partner managing the pipeline, commercial engagement, business development), Swansea University completing the technology development and adoption pipeline through the Healthcare Technology Centre (HTC) revenue/activities, Cardiff University supporting the translation of Medical Innovation through the Clinical Innovation Accelerator (CIA) and UWTSU delivering devices to improve standards of living through Assistive Technologies Innovation Centre (ATIC). Its aims to support and accelerate the translation of ideas from the health care system into new technology, products and services to create lasting economic value in Wales. The project received its first wave of project submissions and these were reviewed in September 2018. Work is in progress to develop the project plans for these opportunities submitted in September.

The Healthcare Technology Centre (HTC)

Started in 2014, the HTC is a strategic Swansea University initiative and is a core component of the ARCH MediPark vision and a project within the Swansea Bay City Region (SBCR). The project will facilitate the expansion of the Institute of Life Science Singleton Campus to create HTC which will allow the incubation of small and medium enterprises as well as the creation of a Skills development centre to create a skills pipeline of talent to enter employment embedding the teaching of clinical skills.

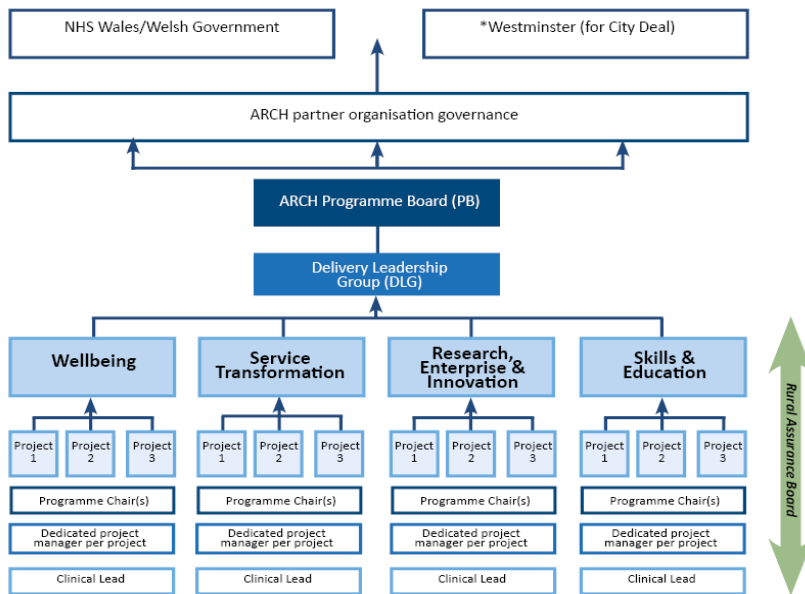
4. GOVERNANCE AND RISK ISSUES

During 2017/18 the ARCH Programme Board membership was strengthened following an Office of Government Commerce (OGC) Welsh Government Gateway review that was conducted in March 2017. The OGC Gateway process examined the programmes and projects at key decision points in their lifecycle and provided assurance that the ARCH Programme could successfully move to the next stage. Feedback on this review was provided to the ARCH Programme Board that same month on 27th March 2017 and a plan was agreed to address the 8 recommendations.

In September 2018 the ARCH Delivery Leadership Group (DLG) began a formal review to examine progress against the initial OGC Gateway review.

The final assurance report on this was reviewed and ratified by the ARCH Programme Board in January 2019.

ARCH Portfolio governance arrangements are outlined below:



The ARCH Programme Board is currently chaired by Andrew Davies, Chair. ABMU Health Board. Karen Miles, Director of Strategy and Performance, Hywel Dda University Health Board, leads the Delivery Leadership Group (DLG)

In light of recent organisational changes within Swansea University, the senior representation from that organisation on the ARCH Programme Board is under review.

Professor Julian Hopkin, in his new role as Rector for Health at Swansea University attended his first ARCH Programme Board meeting in January.

5. FINANCIAL IMPLICATIONS

ARCH Programme Management Office (PMO) Funding

The recurrent tripartite funding arrangements can be seen in the following table:

	Recurring Funding 2018/19 '£000
Funding	
ABMU Health Board	122
Hywel Dda Health Board	122
Swansea University	56
Total Funding	300
Pay	290
Non Pay	10

The ARCH Business Manager reported a stable financial position at the programme Board meeting in January. Slippage is anticipated at year end due to a vacant post in the PMO in Q1 and 2 of 2018/19.

6. RECOMMENDATION

Members are asked to:

- **NOTE** the update on the ARCH Portfolio as received by the ARCH Programme Board in January 2019.

Governance and Assurance							
Link to corporate objectives (please ✓)	Promoting and enabling healthier communities	Delivering excellent patient outcomes, experience and access	Demonstrating value and sustainability	Securing a fully engaged skilled workforce	Embedding effective governance and partnerships		
	✓	✓	✓	✓			
Link to Health and Care Standards (please ✓)	Staying Healthy	Safe Care	Effective Care	Dignified Care	Timely Care	Individual Care	Staff and Resources
	✓	✓	✓	✓	✓	✓	✓
Quality, Safety and Patient Experience							
Implementation of the projects within the ARCH portfolio will support the Health Board in achieving clinical standards for a range of services. Patient experience will be improved as more services are developed in communities as part of the development of Health and Well Being centres.							
Financial Implications							
ABMU has a current recurrent commitment to fund the ARCH PMO. This is matched by Hywel Dda University Health Board. A contribution is also received by Swansea University.							
Legal Implications (including equality and diversity assessment)							
No implications							
Staffing Implications							
A key component of the ARCH portfolio is to help stabilise and grow the workforce across the region, working with partners on sustainable solutions.							
Long Term Implications (including the impact of the Well-being of Future Generations (Wales) Act 2015)							
ARCH is a long term strategic programme to transform the health, wealth and wellbeing of south west wales and its unique approach was designed to be able to support health boards and its partners to deliver on the commitments outlined in the WFGA.							
Report History	The last report received by ABMU Board was in January 2019.						