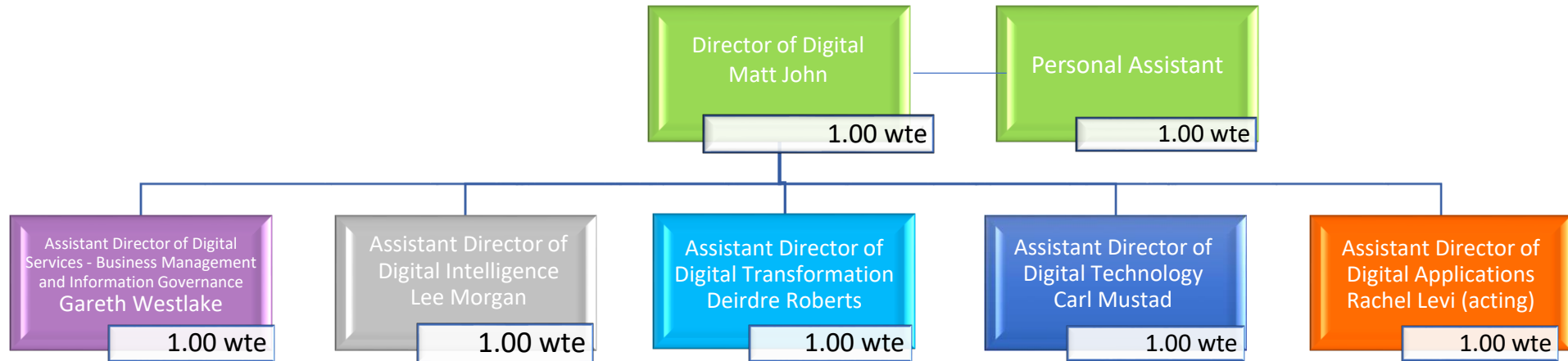
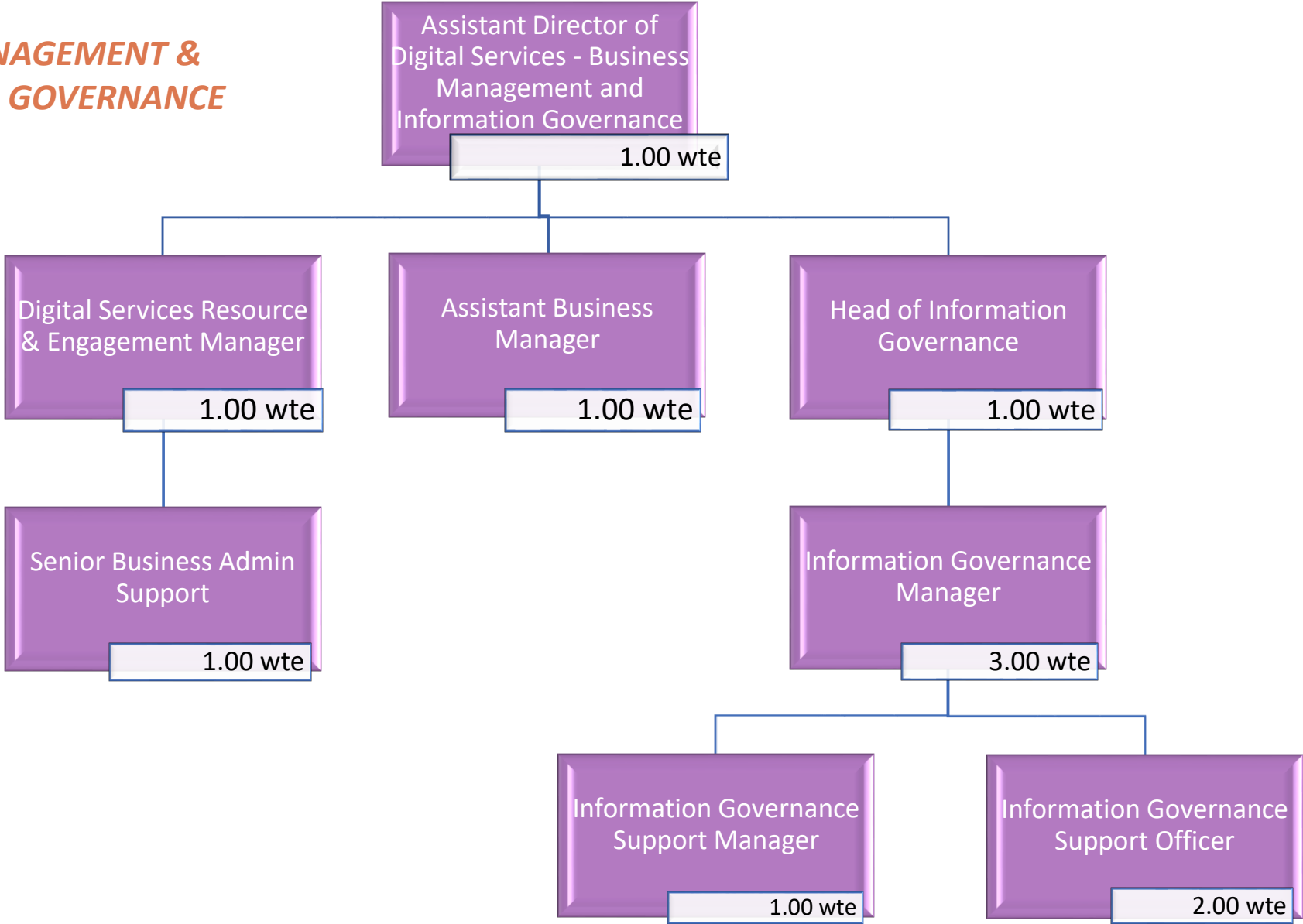


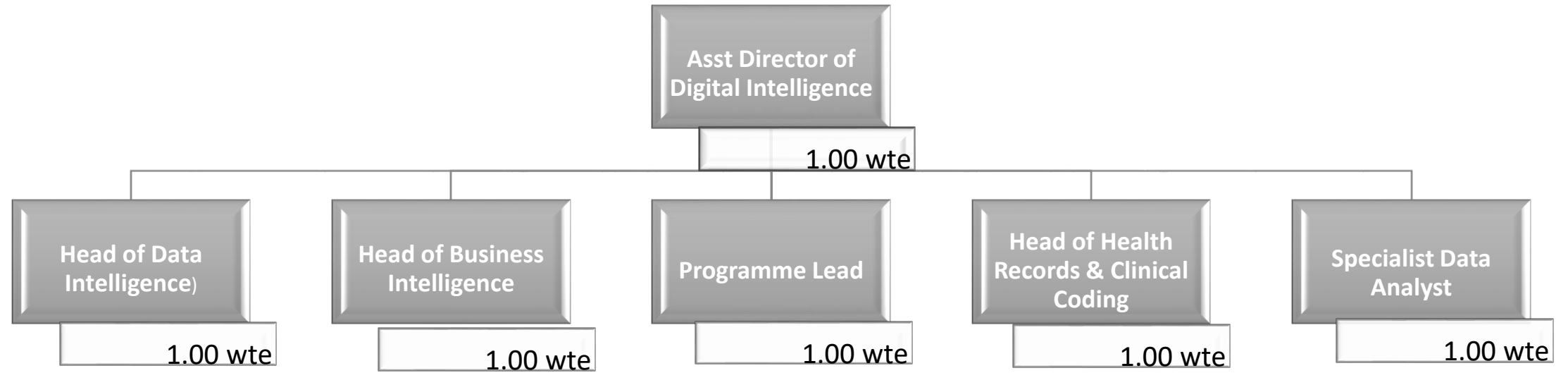
DIGITAL SERVICES LEADERSHIP TEAM

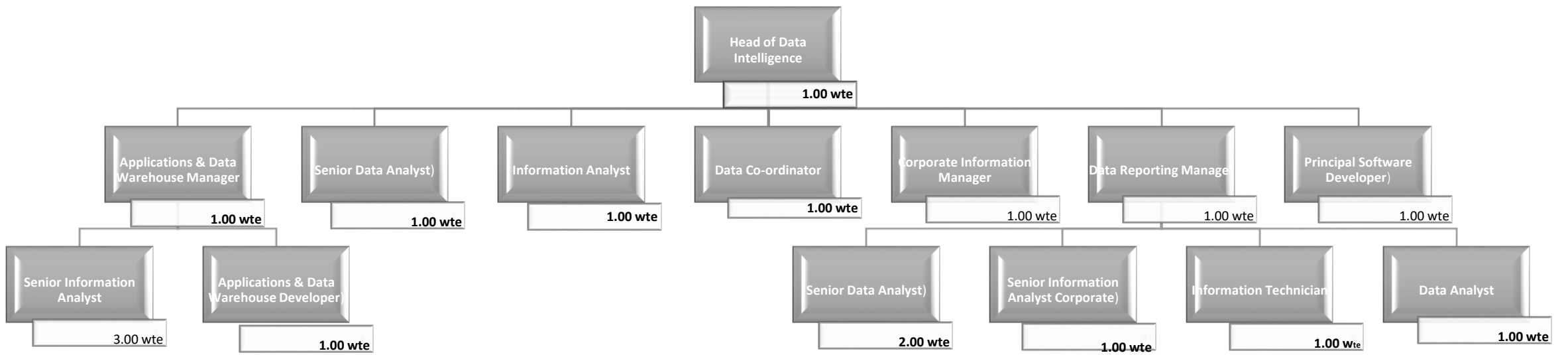


**BUSINESS MANAGEMENT &
INFORMATION GOVERNANCE**



DIGITAL INTELLIGENCE





Head of Business
Intelligence

1.00 wte

BI Partners

5.00 wte

Advanced
Information Analyst

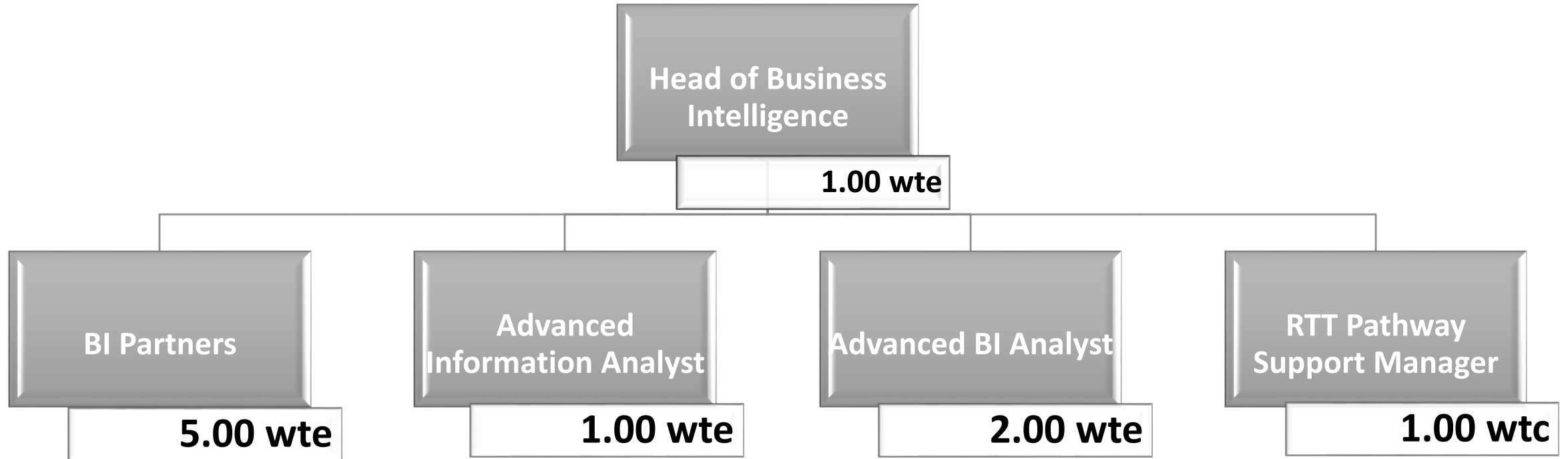
1.00 wte

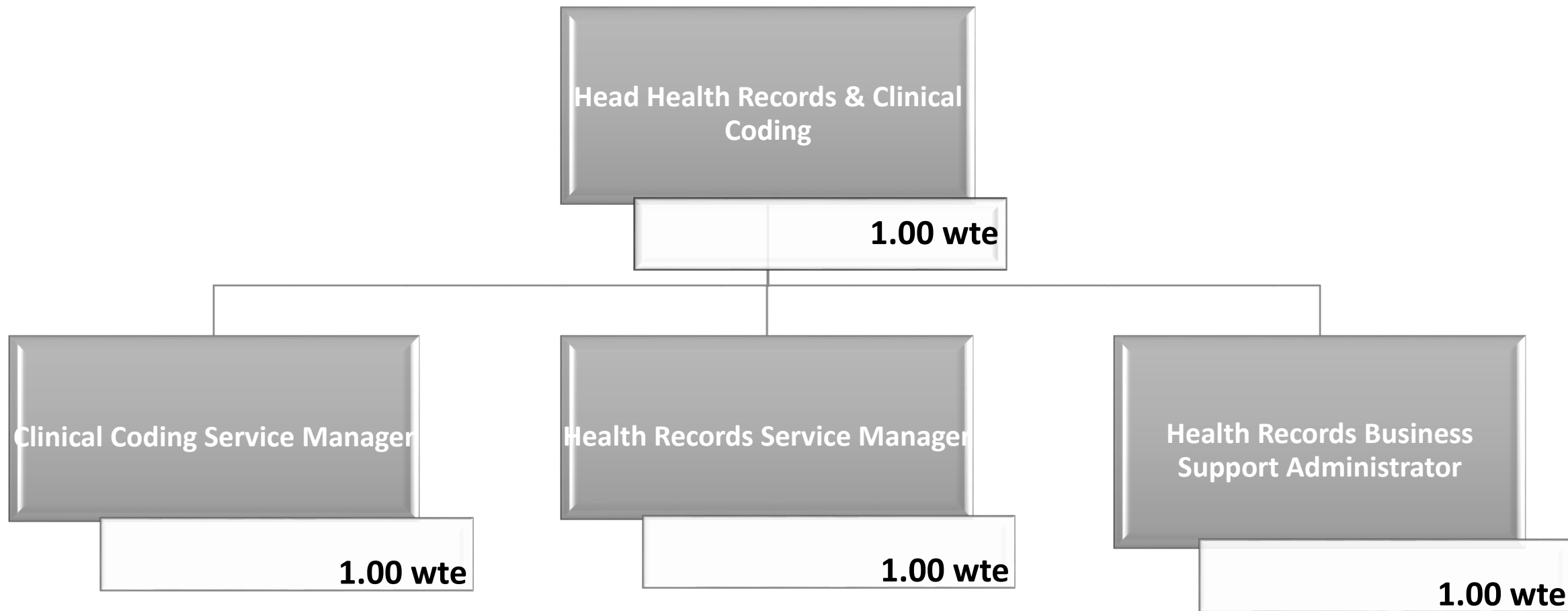
Advanced BI Analyst

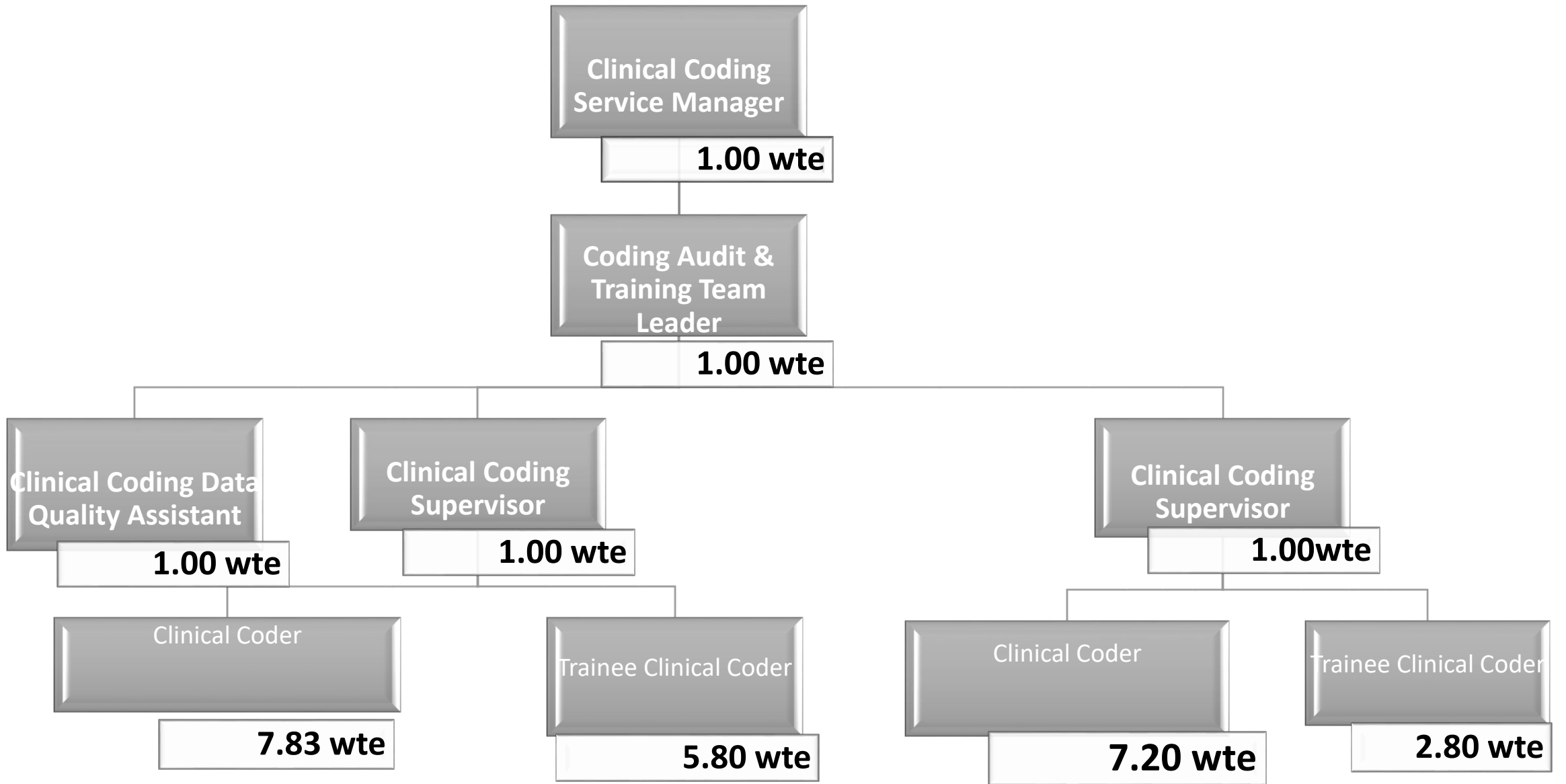
2.00 wte

RTT Pathway
Support Manager

1.00 wtc







Health Records Service Manager

1.00 wte

Deputy Health Records Service Manager

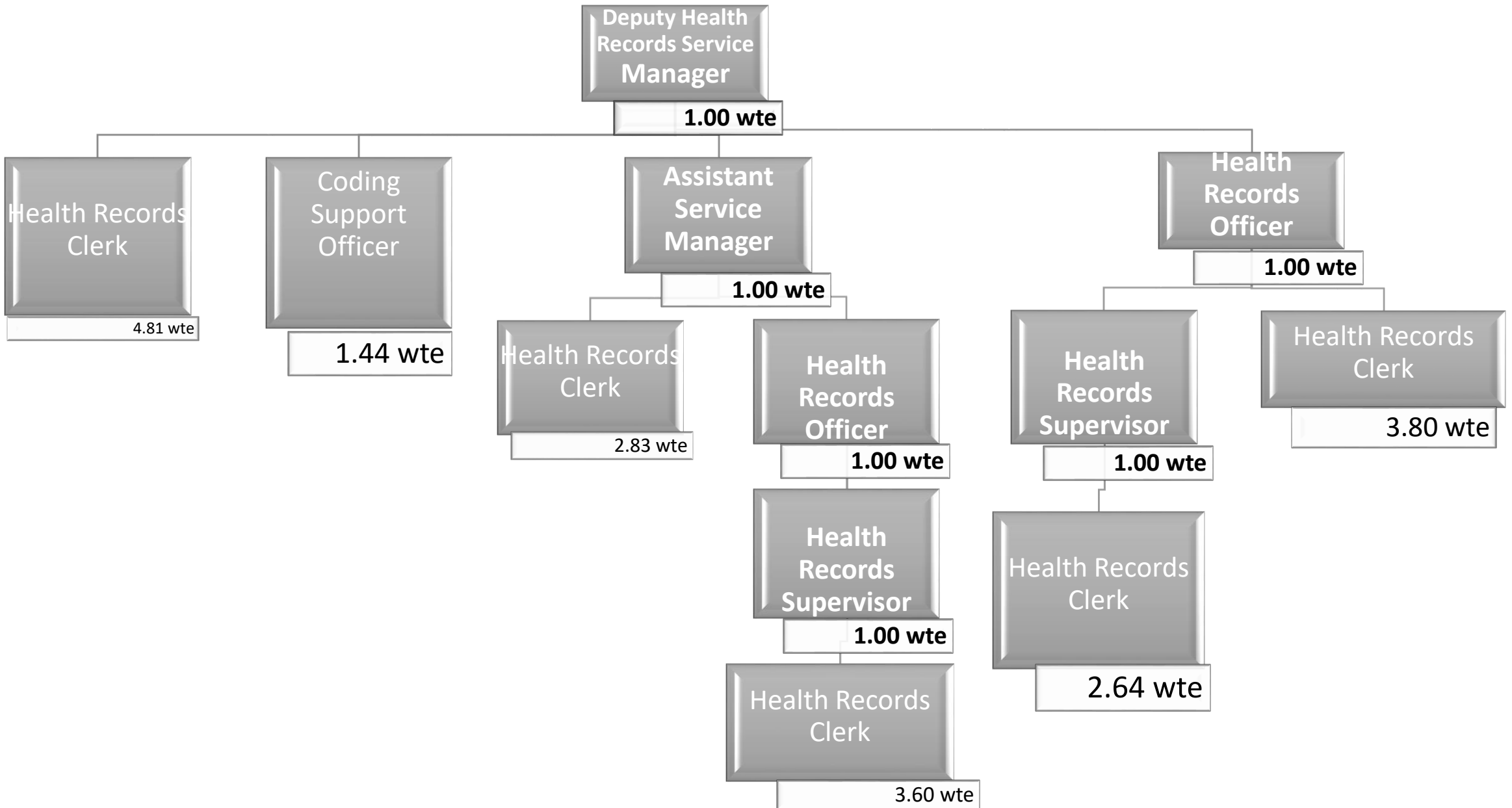
3.00 wte

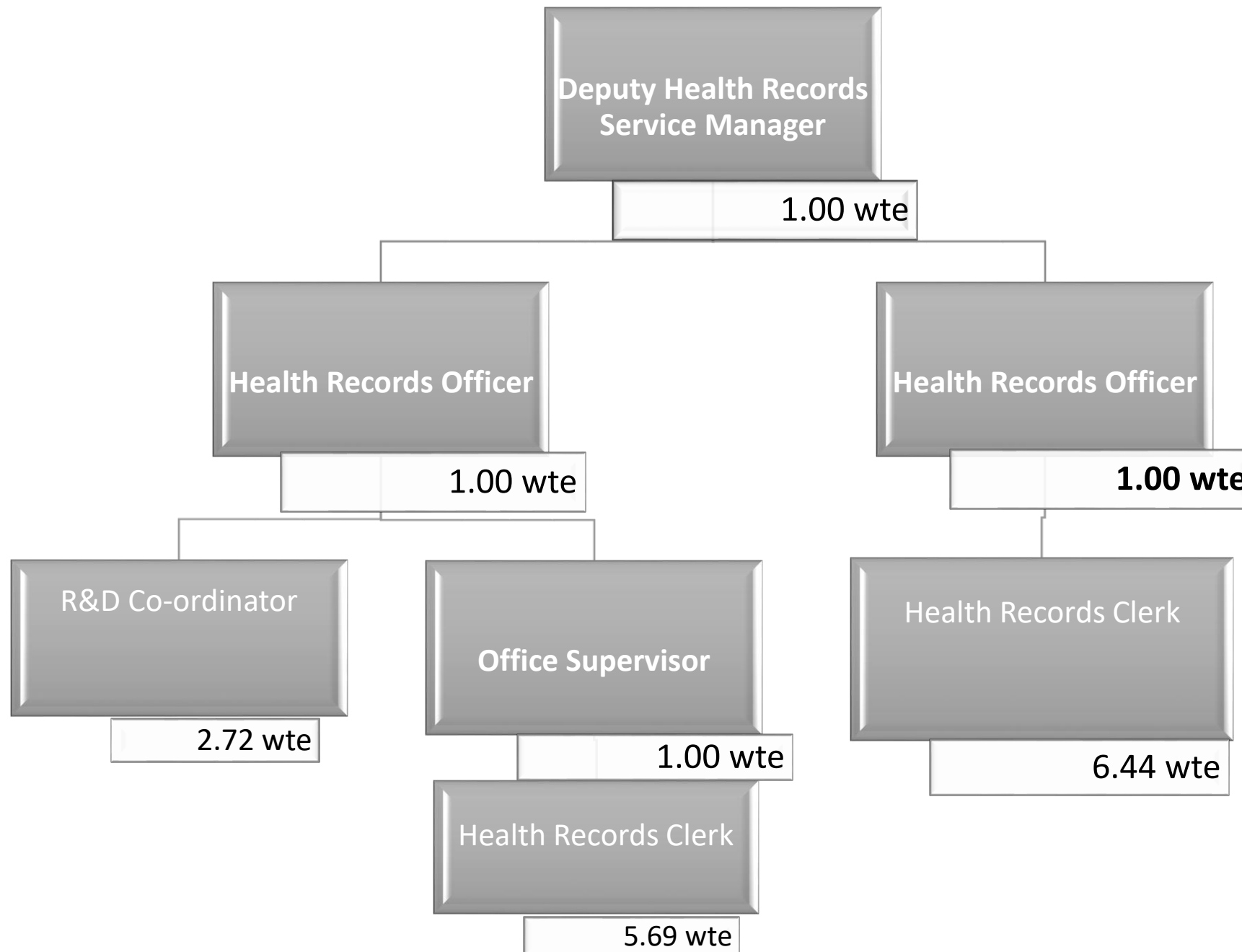
Health Records Service Manager

1.00 wte

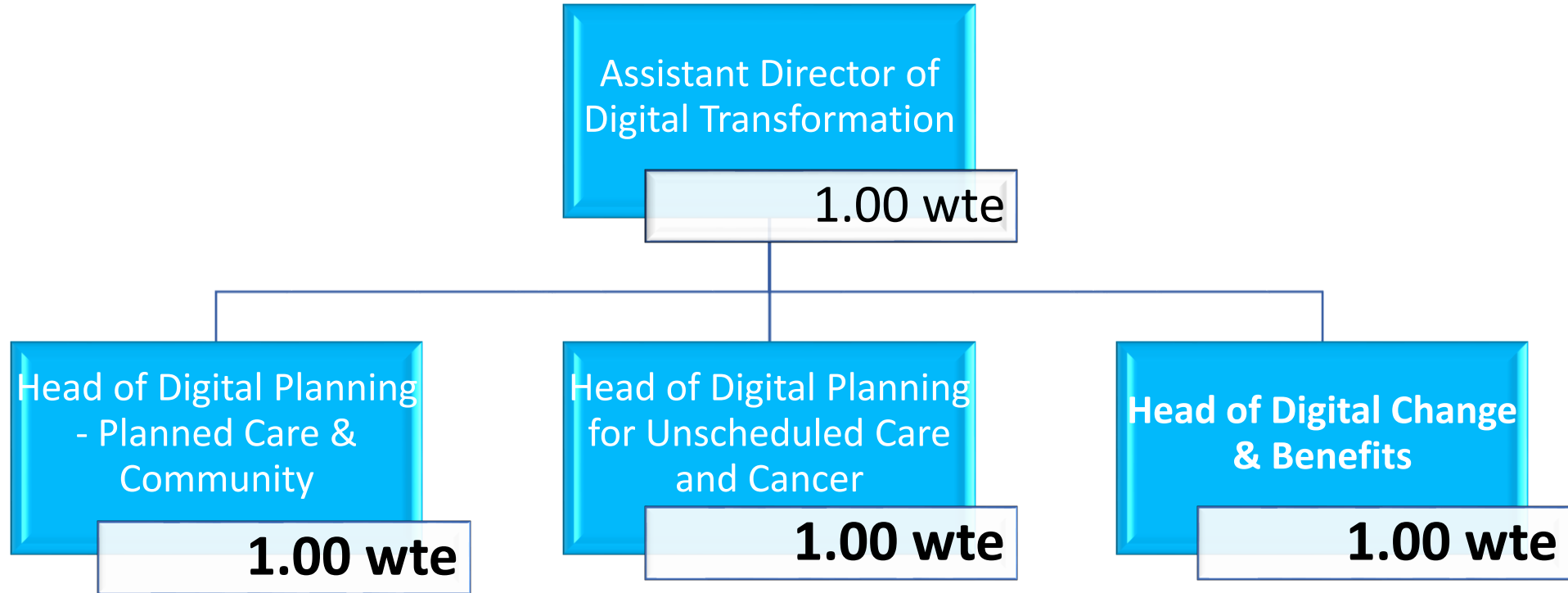
Deputy Health Records Service Manager

3.00 wte

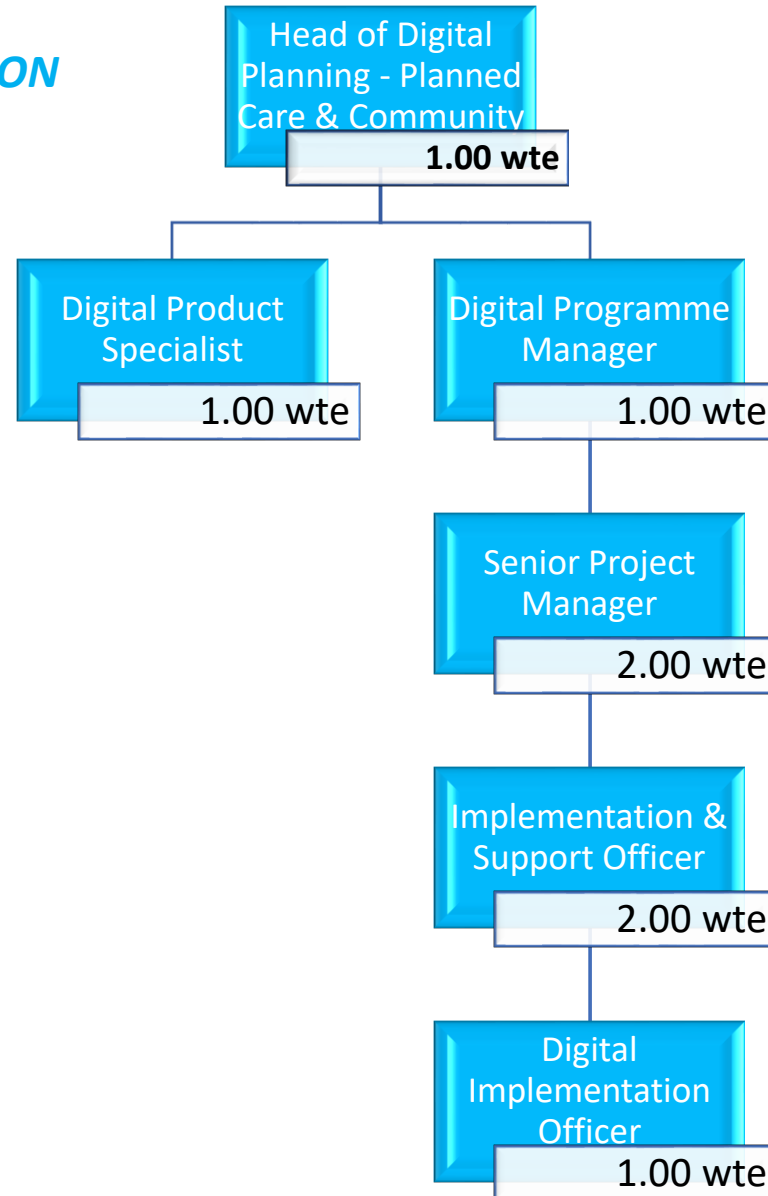




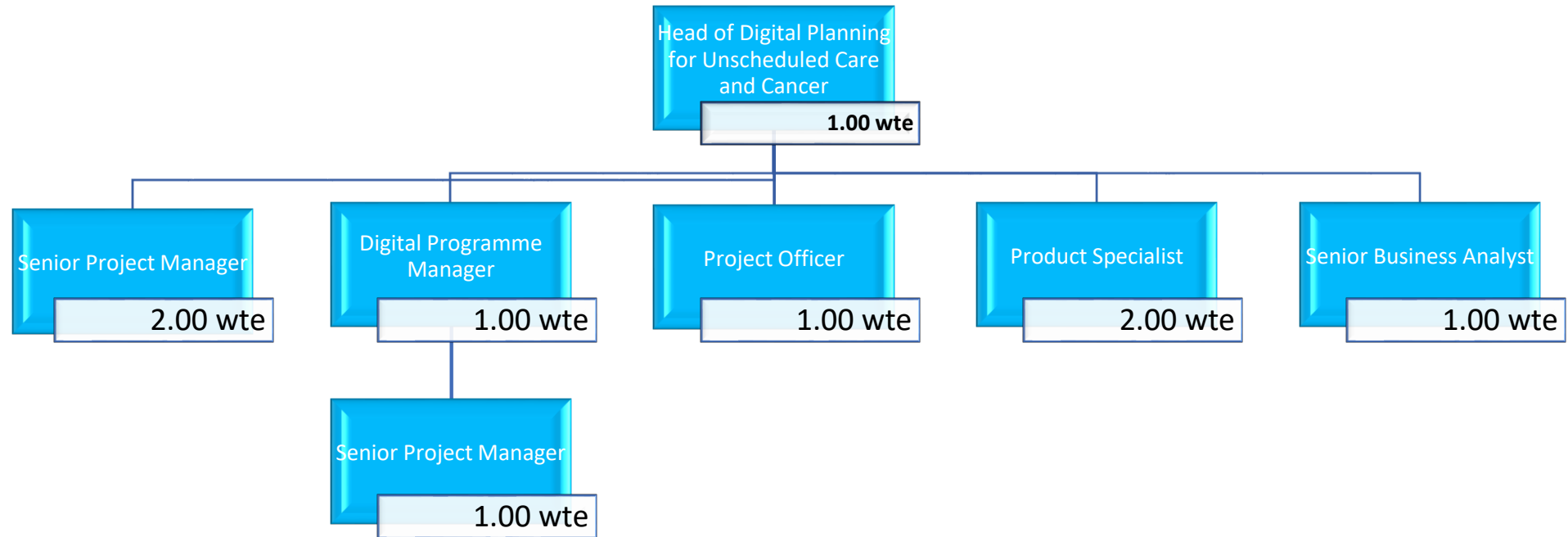
DIGITAL TRANSFORMATION



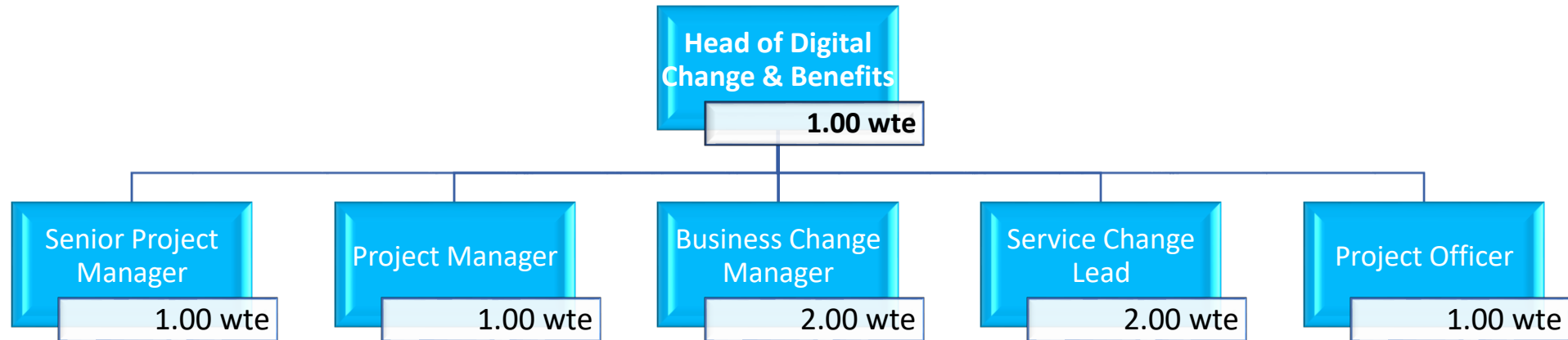
DIGITAL TRANSFORMATION



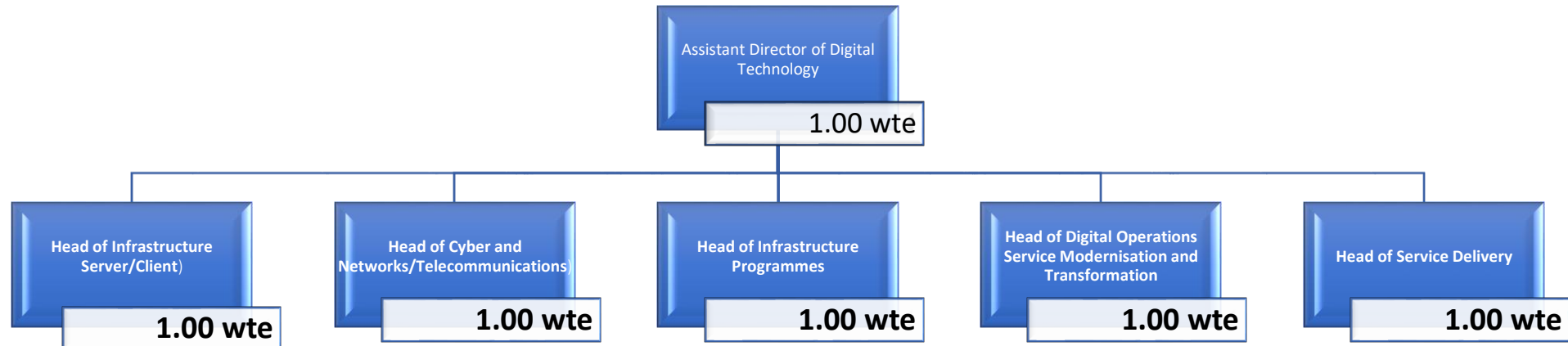
DIGITAL TRANSFORMATION

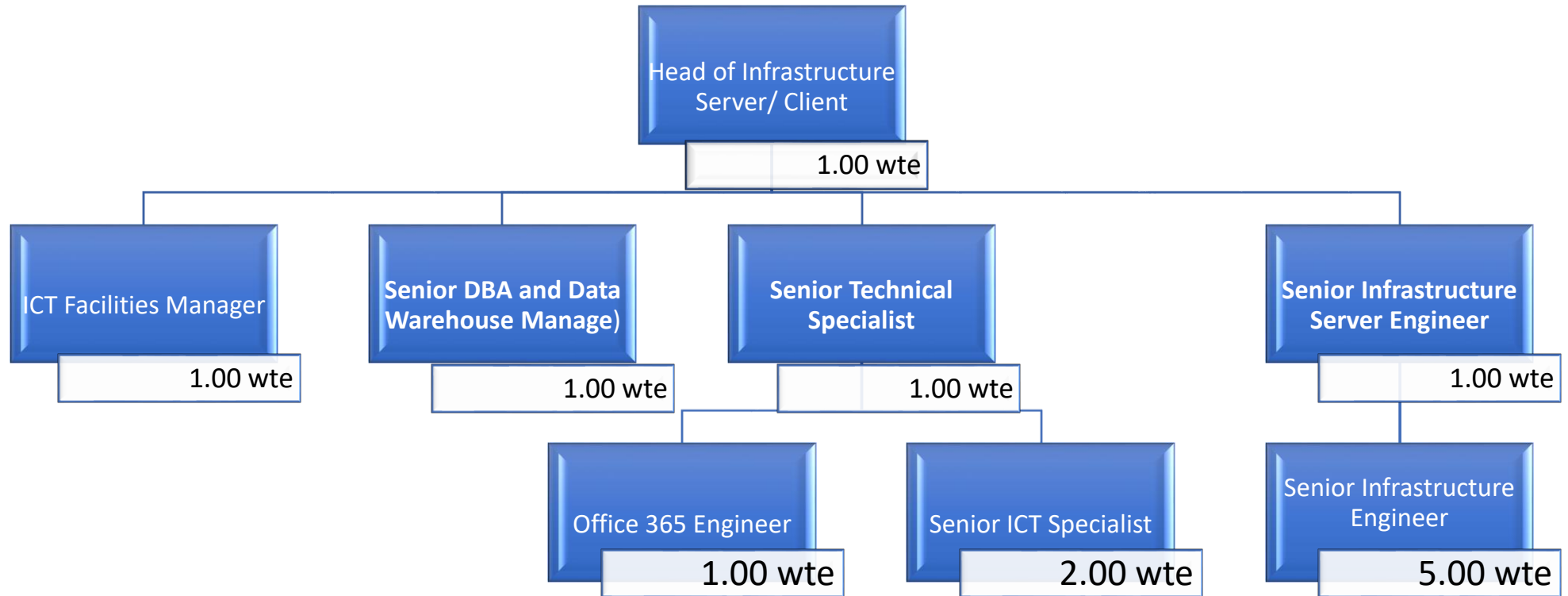


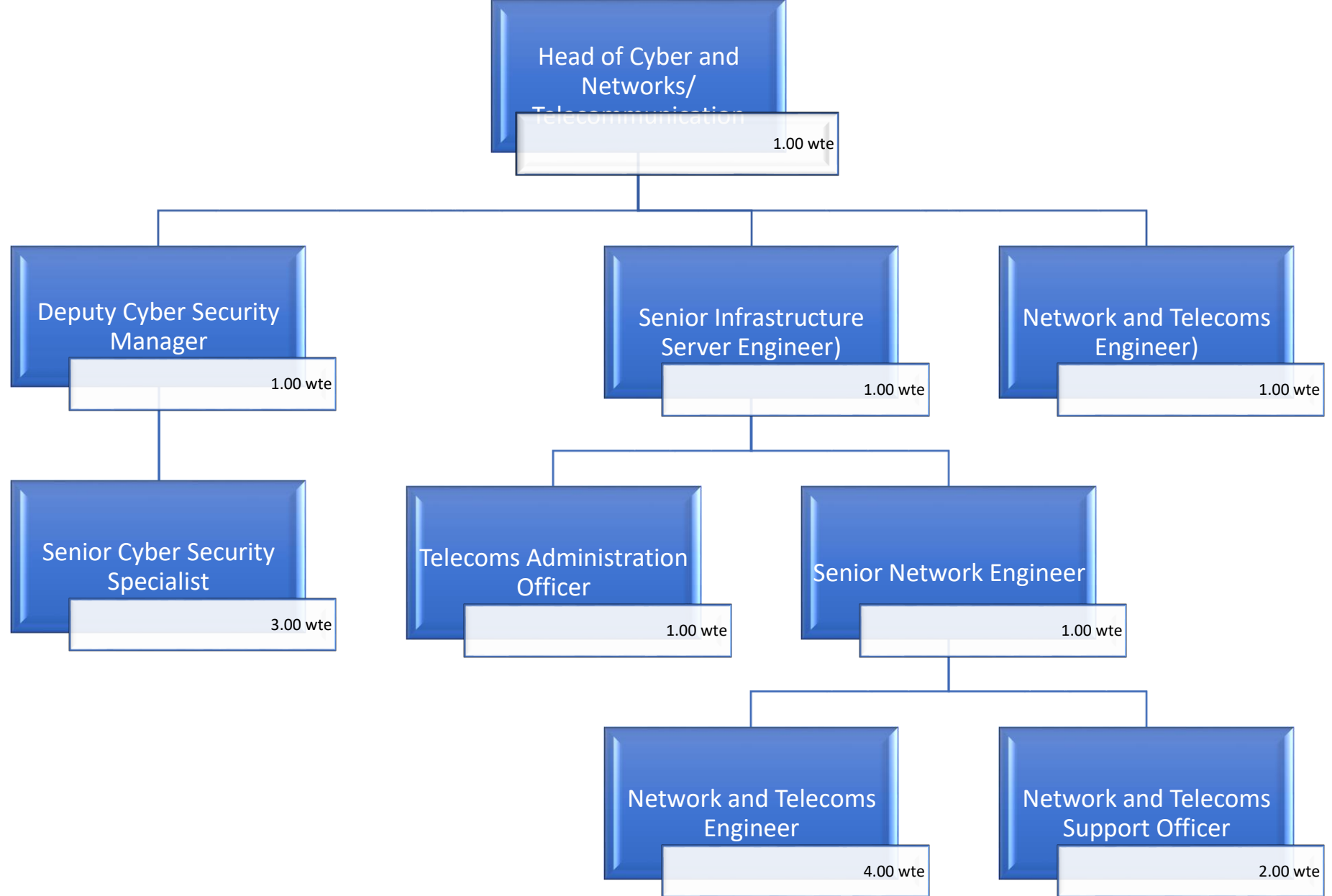
DIGITAL TRANSFORMATION

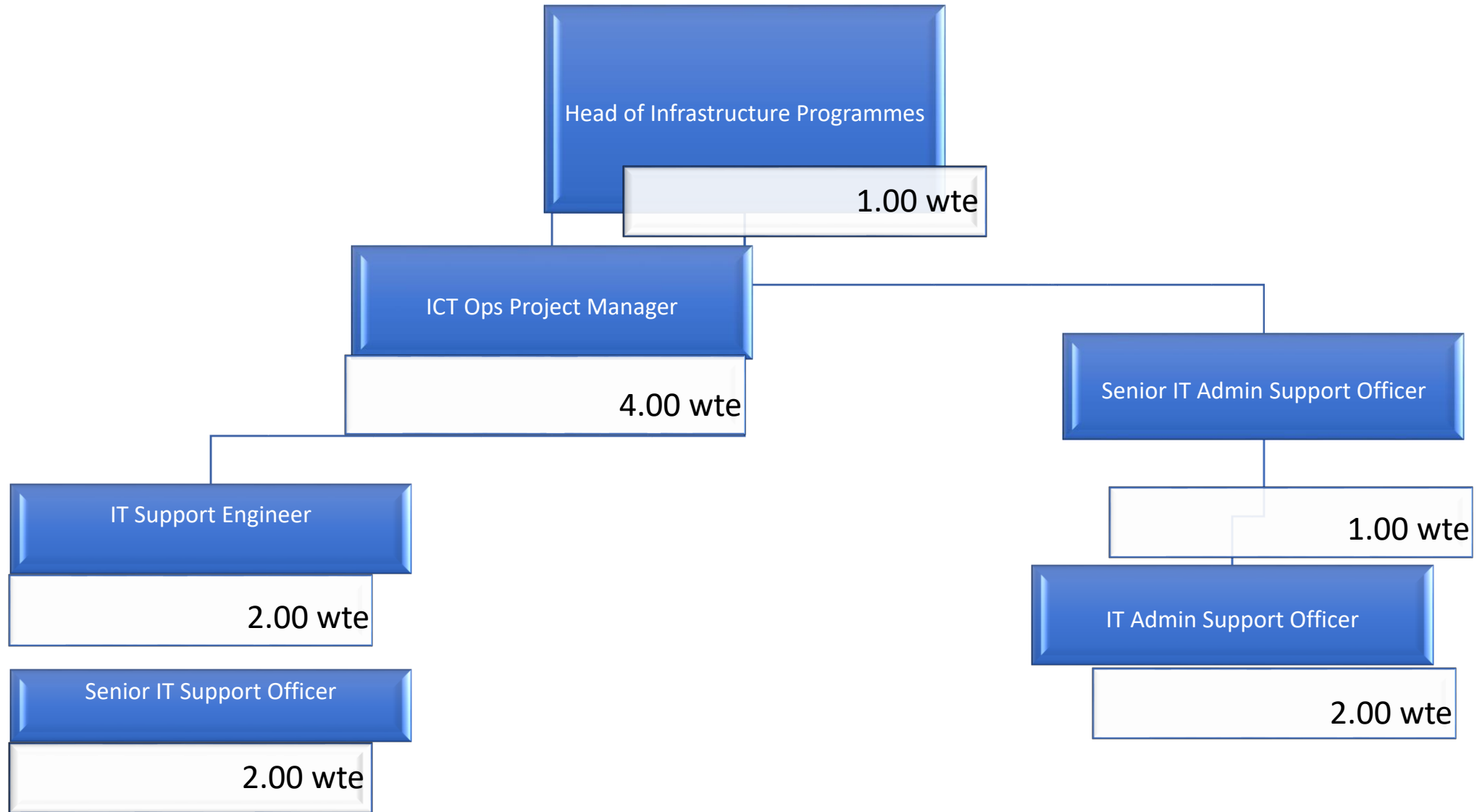


DIGITAL OPERATIONS









**Head of Digital Operations
Service Modernisation and
Transformation**

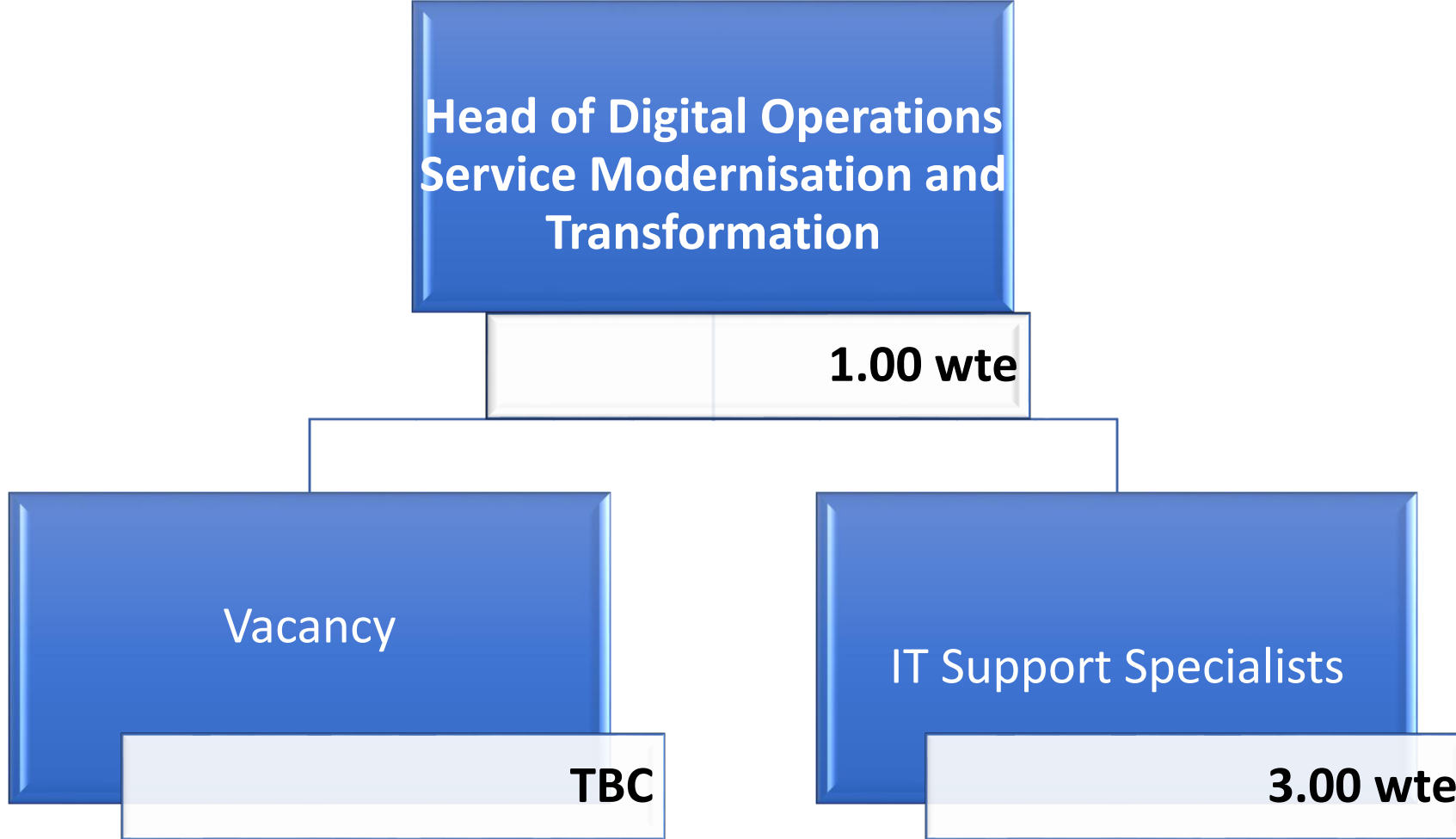
1.00 wte

Vacancy

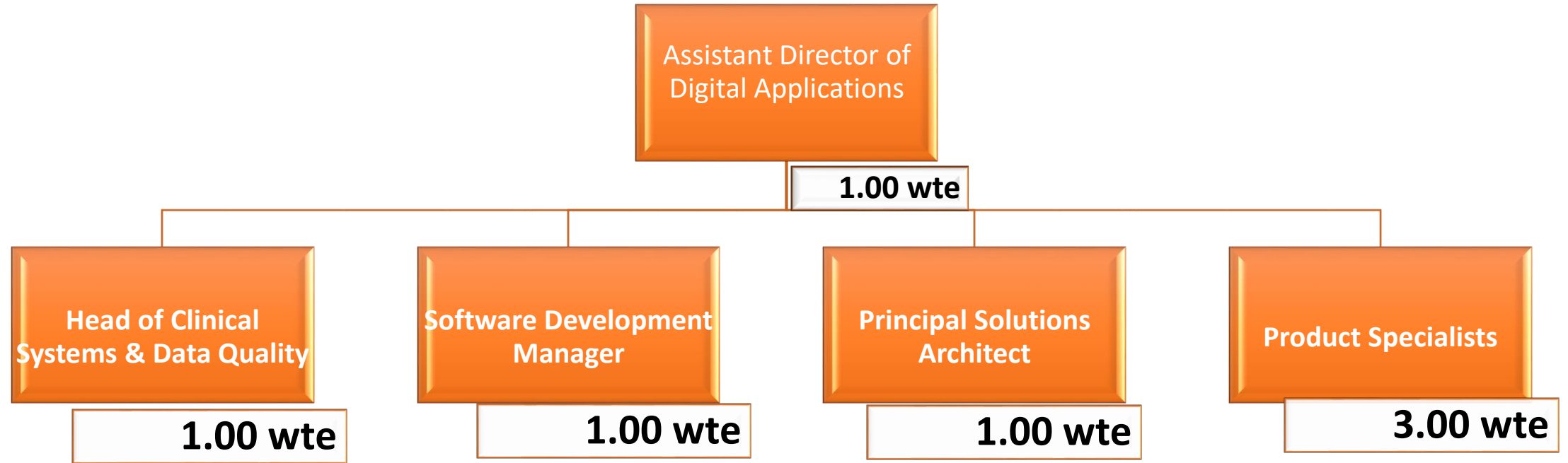
TBC

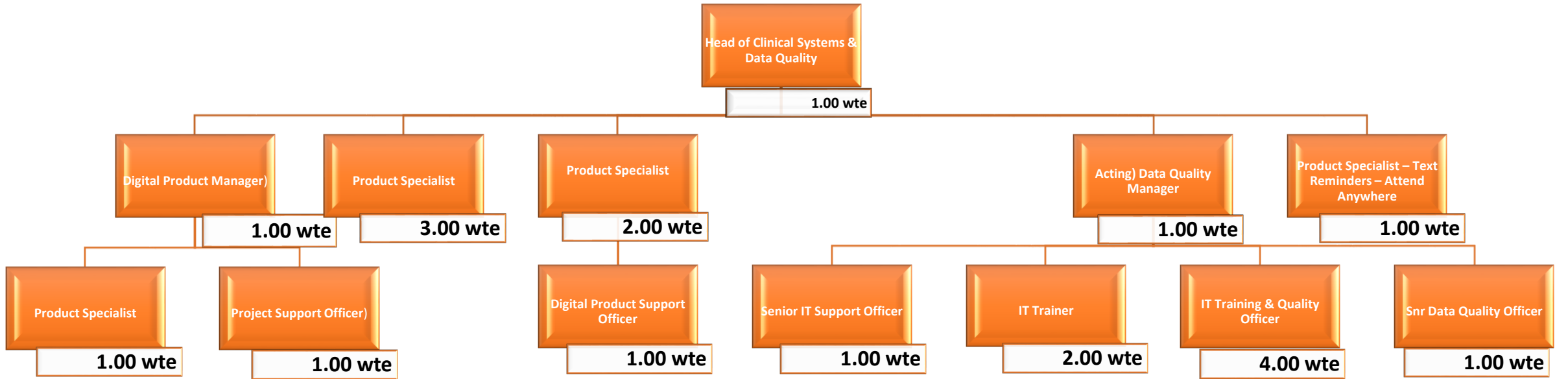
IT Support Specialists

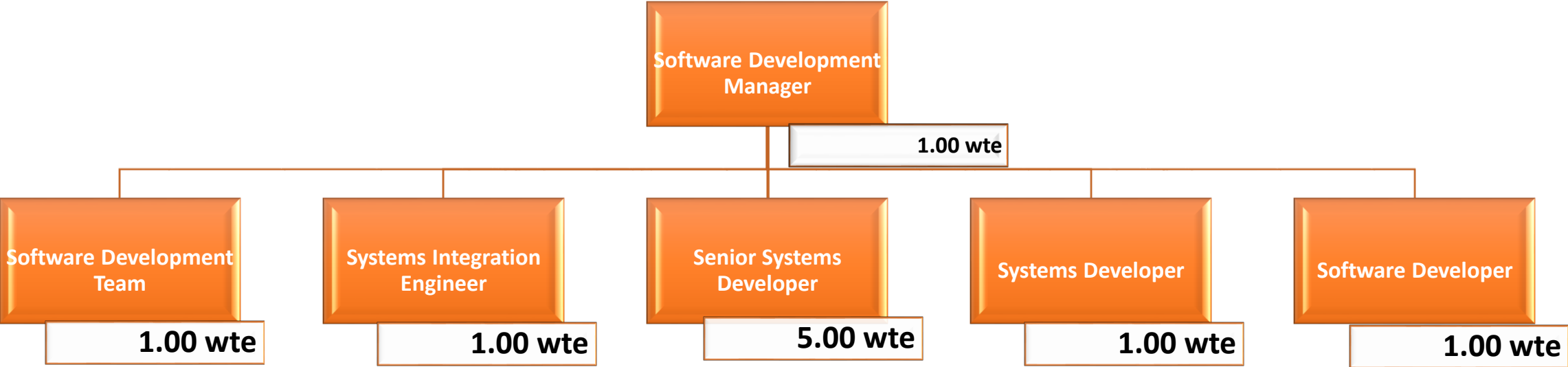
3.00 wte



DIGITAL APPLICATIONS







Principal Solutions Architect

```
graph TD; A[Principal Solutions Architect] --- B[Infrastructure Server Engineer]; A --- C[Digital Solutions Officer]; A --- D[1.00 wte];
```

1.00 wte

Infrastructure Server Engineer

1.00 wte

Digital Solutions Officer

2.00 wte